

Sustainability plan for the continuation and uptake of the platform

DECEMBER 2023

www.regilience.eu



This project has received funding from the European Union's Horizon 2020 research and innovation programme under Grant Agreement no. 101036560.



Project Acronym:	REGILIENCE
Programme	Horizon2020
Type of Action	Coordination and Support Action
Grant Agreement number	101036560
Start day	01/11/2021
Duration	48 months
Contacts	Jen Heemann – jen@ieecp.org Guido Schmidt - guido.schmidt@fresh-thoughts.eu

Document information

Document Factsheet	
Full title	Deliverable 2.5 - sustainability plan for the continuation and uptake of the platform
Work Package	WP2 Tools and Solutions for implementing innovation packages in regions
Task(s)	T2.2 Development of an online platform solution
Author(s)	Joanna Makocka (F6S) Diana Guardado (F6S) Admira Boshnyaku (F6S)
Reviewers	Christian Kind (adelphi)
Date	December 2023

Document dissemination Level

Dissemination Level	
X	PU - Public
	PP - Restricted to other programme participants (including the EC)
	RE - Restricted to a group specified by the consortium (including the EC)
	CO - Confidential, only for members of the consortium (including the EC)



Document history

Version	Date	Main modification	Entity
V0.1	30/11/2023	Draft version distributed for quality review	F6S
V0.2	04/12/2023	Review made by the Climate Innovation Window and weADAPT representatives.	CIW and weADAPT
V0.3	06/12/2023	Internal Quality review	Adelphi
V0.4	12/12/2023	Integration of the internal review suggestion and document improvement	F6S
V0.5	15/12/2023	Review by the project coordinators	FT and IEECP
V1	20/12/2023	Final version, ready for submission	F6S

Legal Notice

The sole responsibility for the content of this publication lies with the authors. It does not necessarily reflect the opinion of the European Union. Neither the European Commission nor any person acting on behalf of the Commission is responsible for any use that may be made of the information contained therein.

© REGILIENCE Consortium, 2021 - All rights reserved; no part of this publication may be translated, reproduced, stored in a retrieval system, or transmitted in any form or by any means, electronic, mechanical, photocopying, recording or otherwise, without the written permission of the publisher or provided the source is acknowledged.



Except otherwise noted, the reuse of this document is authorised under the Creative Commons Attribution 4.0 International (CC BY 4.0) licence. This means that reuse is allowed provided appropriate credit is given and any changes are indicated.

How to cite this report: REGILIENCE (2023). D2.5 Sustainability plan for the continuation and uptake of the platform. <https://regilience.eu/wp-content/uploads/2023/12/D2.5-Sustainability-plan-for-the-continuation-and-uptake-of-the-platform.pdf>



About

REGILIENCE is committed to supporting the European Green Deal and the EU Mission “Adaptation to Climate Change” by fostering the adoption of regional climate resilience development pathways.

The project develops, compiles, shares, and promotes tools and scientific knowledge to support European regions in identifying and addressing their climate-related risks. We work closely with sister projects, such as ARSINOE, IMPETUS, and TransformAr to enhance the capacity of 7 focus regions to tackle the unavoidable impacts of climate change.

The project has received funding from the European Union’s Horizon 2020 research and innovation programme under grant agreement No 101036560.

Statement on mainstreaming gender

Moreover, we acknowledge the need to mainstream gender aspects as a transversal aspect in the project’s activities. The need for gender mainstreaming arises from persistent inequalities in power distribution and access to services and opportunities between people of different sex and/or gender identities. As demonstrated by literature and advocated in the European and international arena, this influences the understanding and perception of climate change dynamics and effects. Women and men, but also people in the LGBTQI+ community, are differently affected by the accelerated change of climate. Only by taking into consideration their diverse visions can scientific research reach meaningful and universal conclusions that properly inform climate action.

For these reasons, the REGILIENCE consortium is committed to including gender and intersectionality as a transversal aspect in the project’s activities. In line with EU guidelines and objectives, all partners – including the authors of this deliverable – recognise the importance of advancing gender analysis and sex-disaggregated data collection in the development of scientific research. Therefore, we commit to paying particular attention to including, monitoring, and periodically evaluating the participation of different genders in all activities developed within the project, including workshops, webinars and events but also surveys, interviews and research, in general. While applying a non-binary approach to data collection and promoting the participation of all genders in the activities, the partners will periodically reflect and inform about the limitations of their approach. Through an iterative learning process, they commit to planning and implementing strategies that maximise the inclusion of more and more intersectional perspectives in their activities.



Project partners





Table of Contents

1	Introduction	8
2	Connection with other tasks and deliverables.....	9
3	Overview of selected platforms.....	12
3.1	Climate Innovation Window (CIW)	12
3.2	weADAPT.....	13
4	Support for selected platforms.....	14
4.1	Overview of tailored support for each platform.....	14
4.2	Report on performed activities.	15
5	Mapping features and functionalities of the online platforms' solution.....	21
6	Tools and Solutions developed by the EU Climate Adaptation Mission projects.	25
7	Sustainability plan for the selected platforms.....	28
7.1	Future steps of the cooperation with selected platforms	29
8	Cooperation with other platforms.....	33
9	Conclusion	36



List of Figures

Figure 1. Connection between tasks and deliverable 2.2	11
Figure 2. Screenshot of the CIW landing page	12
Figure 3 Screenshot of the weADAPT landing page.	13
Figure 4 The three support pillars.	14
Figure 5 Timeline of dedicated support.....	15
Figure 6 Screenshot of the REGILIENCE website	16
Figure 7 Screenshot of LinkedIn post highlighting the cooperation with platforms	17
Figure 8 Screenshot of LinkedIn post with an opinion article highlighting the platform's features and added value	17
Figure 9 Screenshot of a REGILIENCE LinkedIn post featuring CIW	19
Figure 10 Screenshot of LinkedIn post featuring a weADAPT event	20
Figure 11 CIW Business Model Canvas.....	28
Figure 12 weADAPT Theory of Change based on Business Model Canvas	29
Figure 13 CIW platform: 2021 Statistics Dimension	30
Figure 14 weADAPT platform 2021 Statistics Dimension	30
Figure 15 Screenshot of REGILIENCE news in the MIP4Adapt Newsletter, including the reference to the Adaptation Support Tool.....	34
Figure 16 Photo from Central Macedonia region presentation.....	34
Figure 17 Screenshot from the workshop.....	35
Figure 18 “Spotting the risk of maladaptation together” webinar flyer.....	35

List of Tables

Table 1 Relation to other activities	9
Table 2 Platform's data and functionality	21
Table 3 Overview of platform's already implemented data and functionality until November 2023	23
Table 4 overview of tools and solutions developed by the 4 projects	25



Executive Summary

REGILIENCE aims to foster the adoption and wide dissemination of regional climate resilience pathways, following a demand-driven approach and bearing in mind the expertise and knowledge acquired. To do so, the project aims to support platforms that will act as a knowledge tool for regions to assist them in implementing resilience pathways, as stimulated by the Innovation Packages.

This document is a continuation of the work carried out under T2.1 “Performance and impact review of online platforms” and described under D2.1 “Performance and impact review of online platforms”, and is highly connected to the work under T1.5 “Engagement of citizens and wider dissemination”, T2.3 “Opportunities for financing innovation packages through EU, national and third-party financing”, T3.3 “Identification of maladaptation cases and their causes”, T4.4 “Sustainability and long-term exploitation”, and T5.3 “Coordination and cooperation with Innovation Packages, other H2020 projects and initiatives”.

The work reported on this deliverable has been discussed between all partners, strategically under the Work package and tasks leaders' meetings, and more particularly under the Topic 2 “Communications” meeting, led by ICLEI & F6S partners, which includes the discussion of tasks 1.2, 1.3, 1.5 and 2.2. Additional specific meetings were carried out with FT and IEECP (project coordinators) to align the work with T5.3.

This task started with the development and sending of the six platform reports, and the official establishment of the close collaboration with the two selected platforms: Climate Innovation Window (CIW) and weADAPT. Additionally, the project is also cooperating with Climate-ADAPT (<https://climate-adapt.eea.europa.eu/>), and the EU Mission on Adaptation to Climate Change Portal (MIP4ADAPT - <https://climate-adapt.eea.europa.eu/en/mission/the-mission/about-mip4adapt>).

This document details the tailored support for selected platforms as well as proposed sustainability plan for the continuation and uptake of the platforms - it includes all possible scenarios for the platform's continuation or its integration into broader platforms.

This deliverable has been prepared as part of Task 2.2 Development of an online platform solution from WP2 Tools and Solutions for implementing innovation packages in regions.

A revised version of this deliverable will be submitted by month 47 under the name D2.2 “New platform or enhancement tools”.



1 Introduction

REGILIENCE aims to foster the adoption and wide dissemination of regional climate resilience pathways as well as to implement the LC-GD-1-3-2020 Innovation Action projects results on the Innovation Packages. To do that, the project reviewed and is fostering synergies of online platforms to improve their performance and usability for regions and communities.

The review, under T2.1, went through the multi-criteria framework to evaluate and analyse the performance and impact of the existing knowledge-exchange platforms, considering the objectives and the transition pathways in the prioritised regions. Ending with the selection of 2 platforms for close collaboration, namely Climate Innovation Window and weADAPT, the D2.1 served as input into Task 2.2 “Development of an online platform solution”, providing guidelines towards the best course of action in developing a new or upgrading existing platform(s).

This document, D2.5 Sustainability plan for the continuation and uptake of the platform, is detailing the means of collaboration, the sustainability plan for each platform and other types of strategic cooperation with two other big platforms.

The REGILIENCE project does not intend to create a new platform that will serve just as a promotion platform during the project's existence but is closely collaborating with platforms, aiming to increase their number of users compared to previous systems by 10%. Our other goal is to increase knowledge platforms' usage compared to previous systems by 20%.



2 Connection with other tasks and deliverables

The deliverable 2.5 “Sustainability plan for the continuation and uptake of the platform” is related and connected with the task 2.1 “Performance and impact review of online platforms” and with task T2.2 “Development of an online Platform Solution”. It is the continuation of the work reported in the deliverable 2.1 “Performance and impact review of online platforms”. Additionally, this deliverable relates to deliverable 4.4 “Long-term sustainability and exploitation strategy” and with T5.3 “Coordination and cooperation with Innovation Packages, other H2020 projects and initiatives”.

The following table reflects the name and description of each task and deliverable and how it is contributing to the activities reflected in this document.

Table 1 Relation to other activities

Name of the tasks/deliverable	Aim	Contribution to D2.5
T1.3 Network knowledge exchange	This task aims to foster knowledge management cooperation amongst the existing networks, strengthen the knowledge of the EU Community of Practice on regional resilience pathways, and to benefit from its knowledge for the implementation of the Innovation Packages and the development of pathways in the REGILIENCE priority regions.	This task is contributing to the dissemination of the online climate adaptation platforms through cooperation events.
T1.5 Engagement of citizens and wider dissemination	This task aims to communicate and raise awareness on the REGILIENCE results, main achievements and other related information. This task is coordinating its social media channels, newsletter and website/REGILIENCE platform.	This task is supporting the wider dissemination of the online climate adaptation platforms, with main focus on Climate-ADAPT, MIP4ADAPT, weADAPT and CIW. The communication trainings are being decided under this task.
T2.1 Performance and impact review of online platforms	This task aimed to list and review more than 120 climate adaptation platforms, ending with the selection of the most suitable ones.	This task supports the decision to not develop a new platform and the selection of the two platforms for close collaboration.



T2.2 Development of an online Platform Solution	Aims primarily at setting up/improving online platform(s) that will act as a knowledge tool for regions to assist them in implementing resilience pathways, as stimulated by the Innovation Packages.	Dedicated task for the definition and implementation of the tailored support and means of cooperation with the platform owners/representatives.
T2.3 Opportunities for financing innovation packages through EU, national and third-party financing	The objective of this task is to create an updated and comprehensive overview of pertinent EU and national funding programs aimed at fostering climate action. This overview will serve as a resource for the development and implementation of regional inter-sectorial resilience pathways.	The funding factsheets produced under this task are part of the tools and solutions list developed by the first four mission projects, which aim to be integrated by the online platforms. Currently, it is already integrated and showcased on the REGILIENCE website and is under conversations with MIP4Adapt for further integrations.
D2.1 Performance and impact review of online platforms	Report for assessing the Performance and impact review of online platforms to identify the suitable characteristics for the REGILIENCE online support tools.	Reports about the work done under T2.1, explaining the decision to not develop a new platform, and why the project chose CIW and weADAPT for close cooperation.
T3.3 Identification of maladaptation cases and their causes”, T4.4 “Sustainability and long-term exploitation	Task 3.3 aims to identify and analyse causes of maladaptation and is being used for gaining new insights into the characteristics, root causes and drivers of maladaptation and avoiding future maladaptive actions.	The content produced under this task (self-assessment maladaptation tool) is part of the tools and solutions list which aim to be integrated by the online platforms. Currently this tool is displayed on the REGILIENCE website, and a specific MIP4Adapt webinar (in cooperation with REGILIENCE) was made to disseminate the tool.
D4.4 Long-term sustainability and exploitation strategy and T4.4 Sustainability and long-term exploitation	Document and task present the strategy for the long-term sustainability and exploitation, and describes exploitable assets, including tools developed.	This document is contributing with the list of solutions available from Innovation Actions: ARSINOE, IMPETUS, and TransformAr, promoting their adoption and wider dissemination.
T5.3 Coordination and cooperation with Innovation Packages,	This task is assuring the overall, institutional, cross-topic aspects, and some other specific interaction between the four	This task is coordinating the high-level cooperation between REGILIENCE, Climate-ADAPT and MIP4ADAPT. It is also



other H2020 projects and initiatives	Mission on Adaptation projects, and other relevant initiatives.	contributing for the development of the strategy behind the support of CIW and weADAPT.
--------------------------------------	---	---

Below, can be found a diagram summarizing the connection between tasks and the deliverable 2.2.

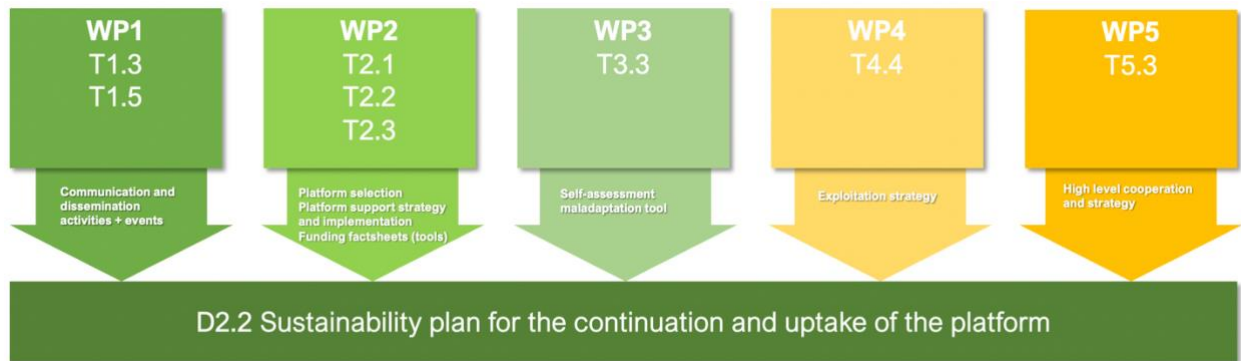


Figure 1. Connection between tasks and deliverable 2.2



3 Overview of selected platforms

3.1 Climate Innovation Window (CIW)

As mentioned in D2.1 Performance and impact review of online platforms, the platform Climate Innovation Window is a dedicated space for innovations dealing with climate change. Visitors can share and explore innovations on the homepage, filtering them by hazards or topics. Each innovation has a detailed page for additional information, and visitors can directly contact investors or leave comments. Despite having the lowest visitor numbers among analysed platforms, it boasts the second-largest number of registered users. The platform targets a diverse range of stakeholders, connecting innovators with potential clients to accelerate climate change adaptation. The target groups are mainly public authorities, SMEs and start-ups, universities, and investors.

REGILIENCE's review found the Climate Innovation Window adaptable to community needs, with the potential for diverse content additions. CIW view REGILIENCE as valuable, expressing a willingness to include relevant REGILIENCE-produced content, indicating potential for future collaboration. Questionnaire responses and exploratory meetings suggest the platform's receptiveness to updates aligning with REGILIENCE project needs. CIW is interested in cooperation, open to content sharing, and willing to discuss updates for mutual benefits. Initial suggestions involve adding more content, with detailed discussions planned in a bilateral meeting for optimal solutions. This collaborative approach highlights the potential for ongoing cooperation between the platform and the REGILIENCE project.

The platform can be visited at <https://www.climateinnovationwindow.eu/>.

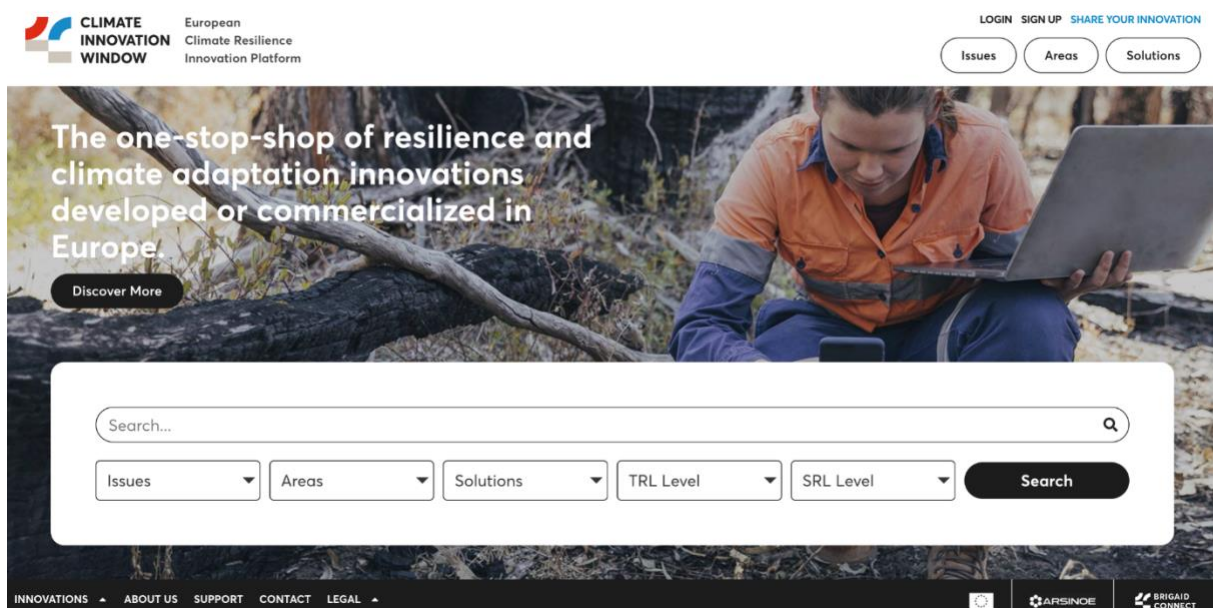


Figure 2. Screenshot of the CIW landing page



3.2 weADAPT

weADAPT is a free, collaborative platform on climate change adaptation issues. It provides access to credible information and a space for users to share experiences and lessons learned within the community. The homepage features an introduction to the platform, including Highlights, News, and the latest content and discussions. A notable feature is the Adaptation Layer, a global map showcasing location-specific climate adaptation case studies. Despite a high bounce rate, the platform attracts the largest number of visitors, indicating significant engagement with the provided data. While primarily intended for practitioners, researchers, and policymakers, the platform welcomes anyone interested in climate change adaptation.

REGILIENCE has identified that weADAPT already incorporates most of the features it seeks. Possible additions, such as an e-learning option or webinar links on climate adaptation topics, could further enhance the platform. Synergies with planned updates need discussion with platform owners, who express willingness to cooperate and share REGILIENCE-produced content if relevant. The initial update idea involves making the platform more user-friendly with increased interactivity and mobile accessibility. This collaborative approach signals the potential for beneficial updates and ongoing cooperation between the weADAPT platform and the REGILIENCE project.

The platform can be visited at <https://www.weadapt.org/>



Figure 3 Screenshot of the weADAPT landing page.



4 Support for selected platforms

4.1 Overview of tailored support for each platform

According to the work performed under T2.1 and presented in [D2.1 Performance and Impact Review of Online Platforms](#), it was decided to improve, update and/or coordinate existing online platforms to provide regional user (target audience) access to requested information and knowledge, as well as to stimulate interaction, co-design and learning (community of practice). , it was decided to improve, update and/or coordinate existing online platforms to provide regional user (target audience) access to requested information and knowledge, as well as to stimulate interaction, co-design and learning (community of practice).

The first step of the task T2.2 was to write the six platform reports coming from the assessment phase. The six platform reports included a) an “introduction” section, where an overview of the whole selection process was provided, b) “considerations” section, where it was explained the context of the platform and some information that came from the bilateral meetings between REGILIENCE representatives and Platform Owners, c) “SWOT analysis”, where it was provided an analysis of the strengths, weaknesses, opportunities and threats of each platform, as a partner for potential cooperation with REGILIENCE, d) “Conclusion”, where it was presented the reasons for the non-selection or selection of the platform. In the case of the two selected platforms, an extra section was added called “future steps” where it was given an overview of the activities and means of cooperation.

After writing all the platform reports, the REGILIENCE team sent the reports to the platform owners by email and arranged a meeting with each of the two selected ones - weADAPT and Climate Innovation Window (CIW) - to officially start the cooperation process. Since this document is a public report, it was decided only to include the two selected platform reports as an annex.

REGILIENCE is cooperating closer with two platforms to establish long-term relationships which will be built on mutual trust: Climate Innovation Window (<https://climateinnovationwindow.eu/>) and weADAPT (<https://www.weadapt.org/>). REGILIENCE is having monthly meetings with the Platform owners to leverage the cooperation between platforms, the platforms’ impact and usability for the users, and new users’ acquisition.

The strategy for the support is based on three pillars as shown in the diagram below:

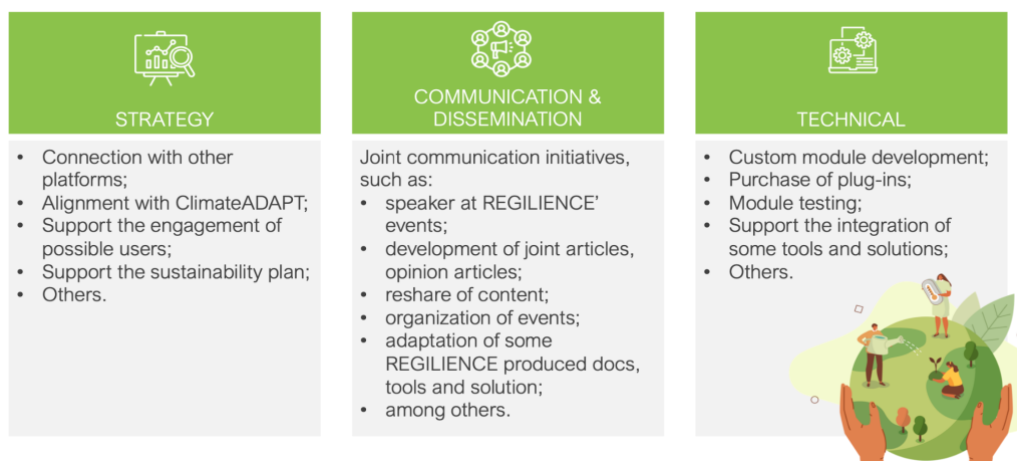


Figure 4 The three support pillars.

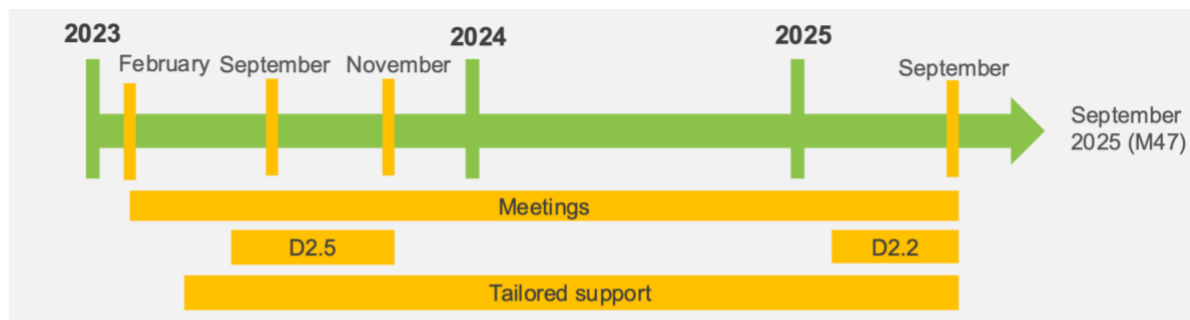


After initial meetings with the two platform owners, it was decided to offer them tailored support, mainly because the platforms have different needs and perspectives, under the headings of strategy, communication & dissemination and technical support.

Bearing this in mind, the cooperation with **Climate Innovation Window** is involving the three pillars: a) strategy: support on its brand registration, connection with other platforms, development of a sustainability plan for the continuation and uptake of the platform; b) module testing (technical); c) communications: social media campaigns, support the cross dissemination. More possibilities regarding support and cooperation will arise after releasing a new version of the platform and after the creation of a value proposition and business model.

For the **weADAPT** platform, the cooperation is including also the three pillars: a) strategy: the support on the connection with other platforms, and the development of a sustainability plan for the continuation and uptake of the platform; b) technical: research on the state of the art of WordPress plug-ins for forums, training modules, peer-to-peer support; the purchase of some of these plug-ins; c) communication: support and training on communication and dissemination tools.

For both projects, the timeline for the activities is based on the following timeline:



- 1 – cooperation with selected Platforms– monthly meetings from February 2023
- 2 – Deliverable 2.5 - sustainability plan for the continuation and uptake of the platform
- 3 – Deliverable 2.2 - New platform or enhancement tools
- 4 – implementation of tailored support for selected platforms

Figure 5 Timeline of dedicated support

4.2 Report on performed activities.

Since February 2023, REGILIENCE has been holding regular meetings and discussions with the platform owners to intensify the cooperation. Numerous activities have been undertaken to ensure seamless communication:

- **Monthly Meetings with Platform Representatives**

Regular online monthly meetings were conducted with CIW and weADAPT to foster collaboration and exchange feedback and the progress of both platforms' development. The meetings usually take 1 hour.

- **Creation of Meeting Minutes Repository**

To streamline documentation and facilitate easy access to information, a dedicated space was created on the REGILIENCE SharePoint for sharing and archiving relevant documents.



• Project Website Updates

The REGILIENCE project website has been updated to reflect the latest and relevant information regarding both platforms. A dedicated tab has been also developed on the website <https://regilience.eu/cooperation-platforms/>.

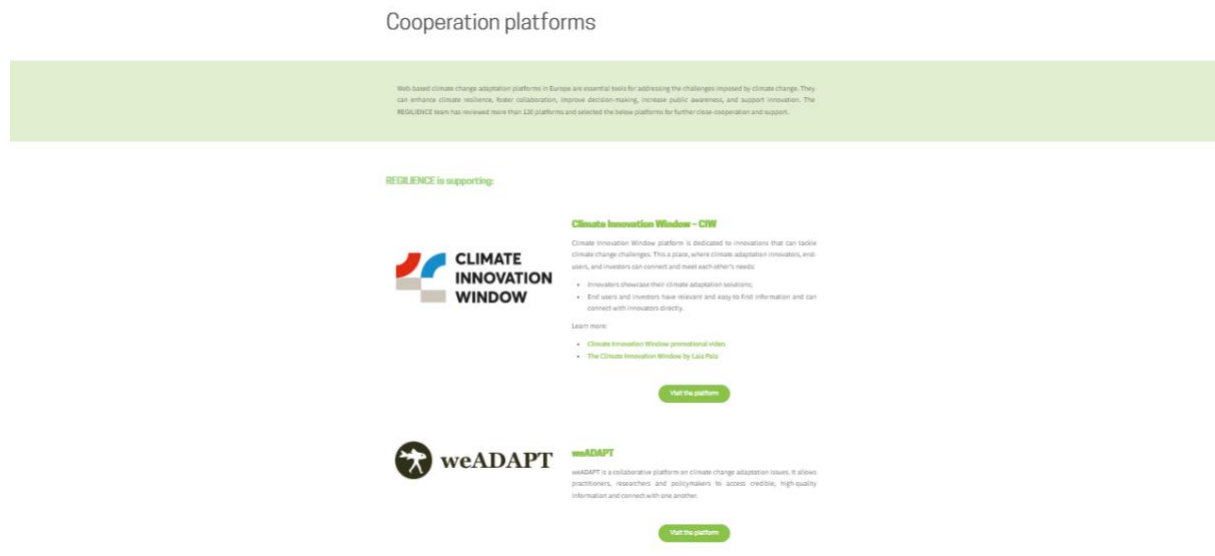


Figure 6 Screenshot of the REGILIENCE website

• Social Media Campaign

A targeted social media campaign regarding established cooperation and platforms has been implemented to increase platforms' visibility and to engage the community. The project disseminated the information through 4 social media accounts:

- [Linkedin page](#) – 1696 followers as of 11.12.23;
- [X page](#) – 968 followers;
- [Facebook page](#) – 60 followers;
- [Youtube channel](#) – 6 subscribers;

A total of 15 dedicated posts were made in the period 01/01 - 11/12/23 aimed at promoting the activities of the platforms REGILIENCE cooperates with and raising awareness regarding their role in climate adaptation. Below is a list of the posts part of this targeted campaign:

- [Web-based climate change adaptation platforms in Europe: why should we use them?- Opinion article](#) - posted on social media on 28/02/23 LinkedIn ([link](#)), X ([link](#)) and Facebook ([link](#)).
- [Cooperation Platforms](#) dedicated page on the REGILIENCE website - posted on social media on 21/07/23 LinkedIn ([link](#)), X ([link](#)) and Facebook ([link](#)).
- “How to foster “just” adaptation” – an event organized by weADAPT – promoted on social media on 25/09/23 LinkedIn ([link](#)), X ([link](#)) and Facebook ([link](#))
- [“The new Climate Innovation Window: Ensuring access to climate solutions by creating a sustainable platform”](#) - posted on 31/10/23 on LinkedIn – ([link](#)) X - ([link](#)) and Facebook - [link](#) . The story of CIW was the first piece of a dedicated rubric to be published on the REGILIENCE website called "Road to Resilience: The Platform's Story." Next story from this rubric will be focused on the weADAPT platform and will be promoted on social media by the end of December 23.



- A follow-up post regarding the story of CIW presenting the article in a different format (downloadable pdf) was made on the 24/11/23 - Linked ([link](#)); X ([link](#)) and Facebook ([link](#)).

Below it can be seen some examples:

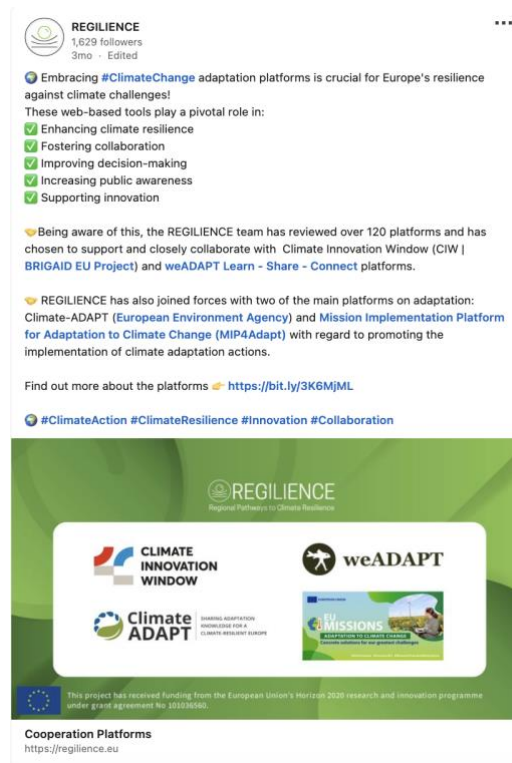


Figure 7 Screenshot of LinkedIn post highlighting the cooperation with platforms

Opinion article highlighting the importance of the platforms:



Figure 8 Screenshot of LinkedIn post with an opinion article highlighting the platform's features and added value



Additionally, REGILIENCE has reshared some posts from both platforms' social media accounts

- **Invitation to attend different activities/trainings**

Both platforms are being invited to attend specific trainings and were given the opportunity to attend trainings on digital marketing.

- **Platform presentation at events**

Both platforms were showcased, for example, at the Autumn Training Course on Climate Risk Management – Strategies and Tools for Regional and Local Challenges, event promoted by the University of Lisbon and the REGILIENCE project, with the support of the European Union under the NextGenerationEU Recovery and Resilience Facility and the EU Mission on Adaptation to Climate Change.

Additionally, each platform received continuous tailored support, according to their needs.

- **Invitation to contribute to strategic newsletters**

CIW and weADAPT has been invited by REGILIENCE to contribute to newsletters such as Climate Resilient Post, Climate-ADAPT, and MIP4Adapt, to promote awareness and knowledge-sharing. REGILIENCE plans to feature case studies and best practices from the platforms in our newsletter in the future.

Specific tailored support to CIW:

Several contributions to the development and sustainability of the platform have been performed:

- Technical:
 - the CIW platform and its modules have been tested by the REGILIENCE team, aiming to identify and fix potential bugs and to test the usability of the new platform.
- Strategy:
 - dedicated support regarding the brand registration process has been provided emphasising important aspect about registration of the trademark the be considered by CIW.
 - Brokerage between the weADAPT and Innovation Actions (IAs) projects (ARSINOE, IMPETUS and TransformAr), aiming to create synergies to support the integration of the IA's tools and solutions (please see table 4) into the platform.
- Communication:
 - the platform has been invited to write the opinion article which has been shared on REGILIENCE social media and the 5th The Climate Resilience post newsletter¹:

¹ Link for the fifth The Climate Resilience Post Newsletter: <https://mailchi.mp/afa8a27bfc1e/the-climate-resilience-post-issue-number-5-is-here-17344248>



Figure 9 Screenshot of a REGILIENCE LinkedIn post featuring CIW

Specific tailored support to weADAPT:

Several contributions to the development and sustainability of the platform have been provided:

- Technical:
 - Research and proposition about possible plug-ins that could support the leverage of users and interactions.
 - The plug-in “Front End PM” is a complete private messaging system for WordPress sites, allowing users to send messages entirely from the front end rather than the Dashboard. This functionality is valuable for keeping users away from the Dashboard area if desired. This plug-in has been purchased: <https://wordpress.org/plugins/front-endpm/#description> <https://wordpress.org/plugins/front-end-pm/>;
 - eLearning plug-in has been bought for one year and during this period it will be tested whether it is suitable for the platform.
- Strategy:
 - Brokerage between the weADAPT and IA projects, aiming to create synergies to support the integration of the IA’s tools and solutions (please see table 4) into the platform.
- Communication:
 - The REGILIENCE team has assessed the website and its analytics from the period December 2019 to May 2023. Several aspects were proposed for consideration.
 - the platform has been invited to write the opinion article which will be shared on REGILIENCE social media and The Climate Resilience Post Newsletter.



- Cross communication activities (example - promoting a weADAPT event on REGILIENCE social media).

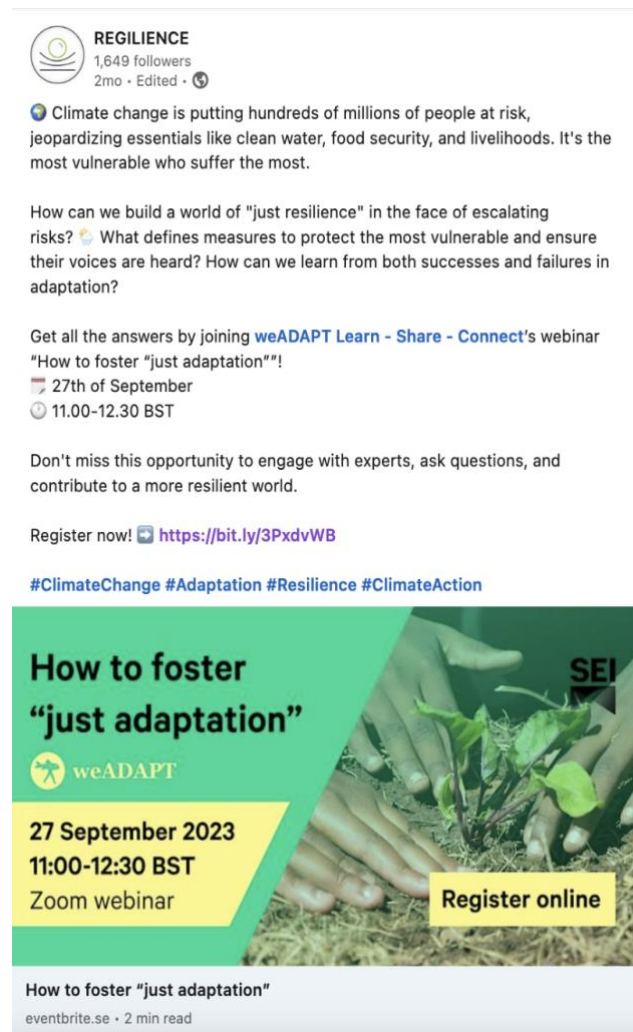


Figure 10 Screenshot of LinkedIn post featuring a weADAPT event



5 Mapping features and functionalities of the online platforms' solution

REGILIENCE aims to provide regional users access to information and knowledge, as well as to stimulate interaction, co-design, and learning (community of practice) in the climate resilience field. According to the project's objectives, this should be implemented by creating an online solution where data and knowledge could be shared for wider usage.

Initially, at the beginning of implementation of Task 2.1 it was planned to set up a new platform, however, after internal discussion this has been considered as a solution that will not contribute to achieving the objective of the task, which is: development of a new online platform that will act as a knowledge tool for regions to assist them in implementing resilience pathways. , Many platforms already exist on the landscape of climate resilience platforms, creating new platform could led to redundancy and overlap of functionalities offered already by different platforms. Additionally, new platform would require efforts on developing maintenance and sustainability which could not be provided beyond the REGILIENCE timeframe. Instead of creating new platform, the focus will be on improving already existing platforms where co-funded changes will be implemented at existing online platforms selected for cooperation with REGILIENCE.

The REGILIENCE team provides support to the platforms – CIW and weADAPT - by improving and upgrading them to provide the regional user (target audience) access to requested information and knowledge, as well as to stimulate interaction, co-design, and learning. The aim of this support is to contribute to the sustainability of selected platforms but also to foster synergies with Climate-ADAPT.

The desirable platform solution should be interdisciplinary with a repository of best practice climate resilience actions in European regions. The ideal knowledge exchange platform should have a wide range of functionalities and should host the data, knowledge, and tools produced by the Innovation Action projects that closely collaborate with REGILIENCE (TransformAr, ARSINOE, and IMPETUS) as well as by REGILIENCE project. By providing support to selected platforms it will be ensured that features will be developed, and data, knowledge, and tools further exploited.

The table below presents the knowledge platforms' desirable functionalities and identified data that could be applied.

Table 2 Platform's data and functionality

Data & knowledge	Description
tools for engagement of stakeholders	Tools and methods developed by REGILIENCE during workshops to engage stakeholders in the events
materials and supporting media items for the capacity building activities of the regional authorities	Funding tool developed by REGILIENCE to raise awareness of available financial on European and national level dedicated to support regional climate resilience. Funding tool is available here: https://regilience.eu/funding-opportunities/
materials and supporting media items for the capacity building activities of the regional authorities	Additional materials will be developed by REGILIENCE in upcoming period such as results from Autumn Schools and EURESFO session
tools for citizens engagement	Citizen survey template developed by REGILIENCE to collect information on citizen awareness and engagement taking into



	consideration different geographic, economic, social and cultural contexts
lessons learned regarding facilitation of resilience strategies for citizens	Maladaptation self-assessment tool developed by REGILIENCE, and best practices identified by the stakeholders for future replication (D4.1. -principles and practices of transformational pathways)
a repository of best practice climate resilience actions in European regions	Reports, case studies, publications, and data related to climate resilience actions in European regions developed by REGILIENCE List of reports and findings is available here: https://regilience.eu/reports-and-findings
e-learning module development or links to webinars with climate adaptation topics (weADAPT)	During the review of online platforms, it has been identified that weADAPT platform could be supported in the development of e-learning modules and equipped with repository of links to webinars with climate adaptation topics
tools and solution developed by IA projects and REGILIENCE	Different tools which are in process of development by the first four EU Climate Adaptation Mission projects ARSINOE, IMPETUS, REGILIENCE and TransformAr to support regions in designing and implementing resilience pathways.
Functionality	Description
peer-to-peer support through the chat/forum	Functionality which enables individuals to interact with each other to provide and receive guidance and advice
the presence of a helpdesk	Availability of a dedicated support service or team that users can reach out to when they need direct assistance, could include the use of chatbot
add and search engine of the best regional climate practices, programmes and programme documents	A feature that allows to add and/or search information or documents related to the best regional climate practices, programmes, documents into a database. The feature will allow to easily find in easy relevant resources and documents related to regional climate initiatives
invitation to join platform solution	The feature allows users to invite others to become members. This feature may simplify the process of expanding the platform's user base, promoting collaboration, and connecting individuals with a shared interest.
link the workspace of the platform to other programmes	Functionality which involves integrating the platform's environment with external software or applications and which allows users to access, share, or collaborate on data and resources seamlessly between the platform and external applications.
present regional climate events	Functionality that allows users to access information and updates about climate events specific to a particular region
monitoring of Innovation Packages	Functionality that allows to monitor the Innovation Action projects activities.

The table in the next page presents the overview of platforms and already implemented functionalities or data.



Table 3 Overview of platform's already implemented data and functionality until November 2023

Data or functionality	Platforms				
	REGILIENCE	CIW	weADAPT	Climate-ADAPT	MIP4ADAPT
Data & knowledge					
tools for engagement of stakeholders	x		x		(x)
funding tool	x				(x)
materials and supporting media items for the capacity building activities of the regional authorities	x				
tools for citizens engagement	x		x		x
lessons learned regarding facilitation of resilience strategies for citizens			x		
comparison of best practices across EU regions regarding facilitation of resilience strategies					
a repository of best practice climate resilience actions in European regions	x			x	x
e-learning module development or links to webinars with climate adaptation topics			x		
tools and solution developed by IA projects and REGILIENCE	x				
Functionality					
peer-to-peer support through the chat/forum			(x)		x
the presence of a helpdesk			x		x
add and search engine of the best regional climate practices, programmes and programme documents			x	x	
invitation to join platform(s) solution	x	x		x	
link the workspace of the platform to other programmes	x			x	
present regional climate events				x	
monitoring of Innovation Packages					



The REGILIENCE website will be active until 2030. To ensure proper long-term exploitation, it is vital that all data and knowledge collected on the REGILIENCE website are effectively disseminated and implemented by other platforms.



6 Tools and Solutions developed by the EU Climate Adaptation Mission projects.

REGILIENCE's long-term objectives for exploitation are inter alia replication of the solutions developed by the Innovation Actions (IAs) projects in other EU regions and further development, evolution and uptake of the solutions developed in IAs regions.

The first four EU Climate Adaptation Mission projects ARSINOE, IMPETUS, REGILIENCE and TransformAr are in the process of developing a wide range of tools as a contribution to the implementation of the Climate Adaptation Mission.

Table 4 overview of tools and solutions developed by the 4 projects

Tool	Owner	Description
ARSINOE Data Catalogue	ARSINOE	The ARSINOE Data Catalogue will act as the single place for collecting and hosting all datasets, together with their metadata, that will be produced, generated and/or used by the ARSINOE case studies. It will offer a User Interface where these can log in and upload their datasets, while it will also be available to external users, providing access and filtering capabilities to the public datasets of the project.
Hot Spot Identification and Prioritization Service	IMPETUS	A tool devoted to the identification of hot spot areas and regions related to potential risks and hazards emerging from climate change and other socioeconomic drivers. This tool considers information from COPERNICUS, EEA and other public repositories at different regional scales to identify potential risks and stakeholders can prioritize regions actions on vulnerable regions.
IMPETUS Resilience Knowledge Boosters	IMPETUS	Tools for hot spots identification, risk assessment and regional dynamic adaptation pathways that can generate innovation packages to be implemented at each region and can be monitored and evaluated with the final ambition to generate lessons learned and replicate them within new RKBs on similar bio-geographical/climatic regions.
Cascading impacts and permissible services modelling tool	IMPETUS	Modelling tool aiming at the assessment of direct and cascading impacts of climate-change-related hazards and the evaluation of mitigation and recovery strategies at the regional level, which include the novel idea of permutation of service nodes.
System Dynamics Modelling (SDM) tool	ARSINOE	System Dynamics is a computer-aided approach to strategy and policy design. The main goal is to help people make better decisions when confronted with complex, dynamic systems, based on analysis and understanding. The approach provides methods and tools to model and analyzes dynamic systems. Model results can be used to communicate essential findings to help everyone understand the system's behaviour.
Distributed Hybrid Modelling for Climate Resilience Analysis	ARSINOE	A modelling framework and methodology aiming at integrating and operating multiple individual models synchronously to conduct the resilience analysis from the view of systems thinking. The distributed modelling framework and methodology allow



		effective and simultaneous communications amongst individual models. The core of the modelling is based on a hybrid simulation model that features the combination of a system dynamics approach, discrete event simulation approach, and agent-based simulation approach.
Traffic Impact Assessment Model	ARSINOE	Flood model outputs will be coupled with the Open-Source Software “Simulation of Urban MObility” (SUMO) via the use of Python scripts developed at the University of Exeter. This will allow for the simulation of potential disruption/impacts to traffic flows within the transportation network.
Playbook for transformational adaptation	TransformAr	Step-by-step guidance to co-develop the way forward for a region to become climate resilient, tested in TransformAr demonstrators. It guides how to co-develop adaptation pathways and provides guidance for engaging in stakeholder workshops. It includes specific guidance on which content to provide, what tools to use and which outcomes can be looked for.
Maladaptation self-assessment tool	REGILIENCE	A checklist for users to self-assess the maladaptation potential of their planned adaptation actions, based on selected risk factors, and spot those factors where further action to avoid maladaptation is needed
Choice experiment survey for understanding the acceptance of transformational adaptation solutions	TransformAr	An important challenge in transforming society towards resilience is behavioural. In TransformAr, the acceptance of climate solutions is being researched in various ways. More specifically, the following research is done: - Large-scale discrete choice experiment to understand broad brush acceptance, and preference, of citizens across Europe for climate change adaptation. The choice experiment asks citizens, in a survey-based approach, to choose between options. Economic arguments are typically provided to assist the choice. - Small-scale discrete choice experiment in Lappeenranta, Finland, to understand the preference and readiness of private plot owners to invest in sustainable urban drainage on their property.
Socio-economic impact assessment of adaptation solutions	TransformAr	A variety of tools and methods are developed and applied to better understand the socio-economic consequences (benefits or trade-offs) of climate adaptation solutions. Offered are Downscaling of macro-economic modelling to regional scale Societal cost-benefit assessment of adaptation investments Avoided damages from floods & droughts
Climate adaptation funding overview tool	REGILIENCE	The funding opportunity factsheets is a useful tool to identify available regional funding opportunities and potential funding sources. It provides a database of information for all different stages of implementation, for different sectors and for various type of organisations. The factsheet is accessible on REGILIENCE website and was developed by FEDARENE
Knowledge Graph (SustainGraph)	ARSINOE	SustainGraph is a Knowledge Graph that considers in a holistic way the tracking of the progress towards the SDG targets and the evolution of indicators at national and regional levels, along with their relationship with specified policies and the implementation of case studies across Europe. SustainGraph is considered the basis for the systemic representation of knowledge related to the SDGs, enabling the collection and homogeneous representation of data along with their semantics and overcoming data management barriers. One of the main objectives of SustainGraph is to enable the development of participatory modelling and analysis processes (e.g., socio-



		environmental models), taking advantage of the semantic alignment of the represented terms and the knowledge produced through the analysis of the information that is made available.
SDGDetector software library for mapping text to the SDGs	ARSINOE	SDGDetector is an open-source software library that takes as input text and provides as output the association of the text with the various Sustainable Development Goals (SDGs), i.e., this piece of code in the programming language Python can be used to assess into what extent a given text covers topics associated with different SDGs. SDGDetector is based on two Natural Language Processing (NLP) algorithms. It combines a traditional machine learning algorithm that detects certain keywords that are associated with individual SDGs and a deep learning technique that uses a transformer-based model.

This list of tools is structured according to the Climate-ADAPT AST steps and can be visited at the REGILIENCE project website: <https://regilience.eu/tools-and-solutions/>.

Tools and solutions cover a wide range of areas related to data management, climate resilience, and sustainability, aiming to support research, decision-making, and action in these domains. Implementing tools on other platforms requires a well-planned strategy that considers the unique characteristics of each platform and their unique users.

To ensure the exploitation of the solutions developed by the IAs projects one strategy will cover implementation of those tools by selected platforms in T2.2 of REGILIENCE project – weADAPT and CIW - as the goal of cooperation is to turn them into practical knowledge sources.

The strategy will be based on key steps:

- 1. identification of the platform where selected tools could provide the most value** – this step requires exploring the interest of platforms in tools uptake and their integration and further exploitation. It will require analysis of the platforms' interests but also analysis of their users, thematic scope and platforms' features and characteristics.
- 2. integration of tools** – sessions with platforms and IT specialists to investigate the possible scenarios for tools uptake, scenarios should ensure that tools are integrated seamlessly into the platform's ecosystem. It is crucial that tools work in conjunction with existing tools and services on the selected platforms.
- 3. community building and communication plan** – building the community around selected tools on each platform and supporting the communication plan will ensure the exploitation of tools and further usage by dedicated users.
- 4. user analytics** – analytical tools will be used to track user engagement and behaviour on each platform. This data can help in refining community building and communication plans.



7 Sustainability plan for the selected platforms

The main objective of cooperation with selected platforms – weADAPT and CIW - is to establish a mutual collaboration aimed at enhancing these platforms and transforming them into invaluable sources of practical knowledge and tools for regions, facilitating the effective implementation of resilience pathways.

Until 2025, REGILIENCE will provide tailored support to each platform. REGILIENCE is focusing on supporting both platforms to be more sustainable and gain more users.

As both platforms, CIW and weADAPT, are already running alongside others climate resilience-oriented platforms, and both have developed strategies using business model canvas tools, the purpose of cooperation would not be to double the activities already performed but to focus on the main activities which will help both platforms become well-recognized and achieve their goals already specified by the management tool. Both platforms shared with REGILIENCE their business models. Since this is a public deliverable, any confidential information will not be revealed, and only non-sensitive data related to their business model will be shared. In this sense, below it is the CIW Business Model Canvas:

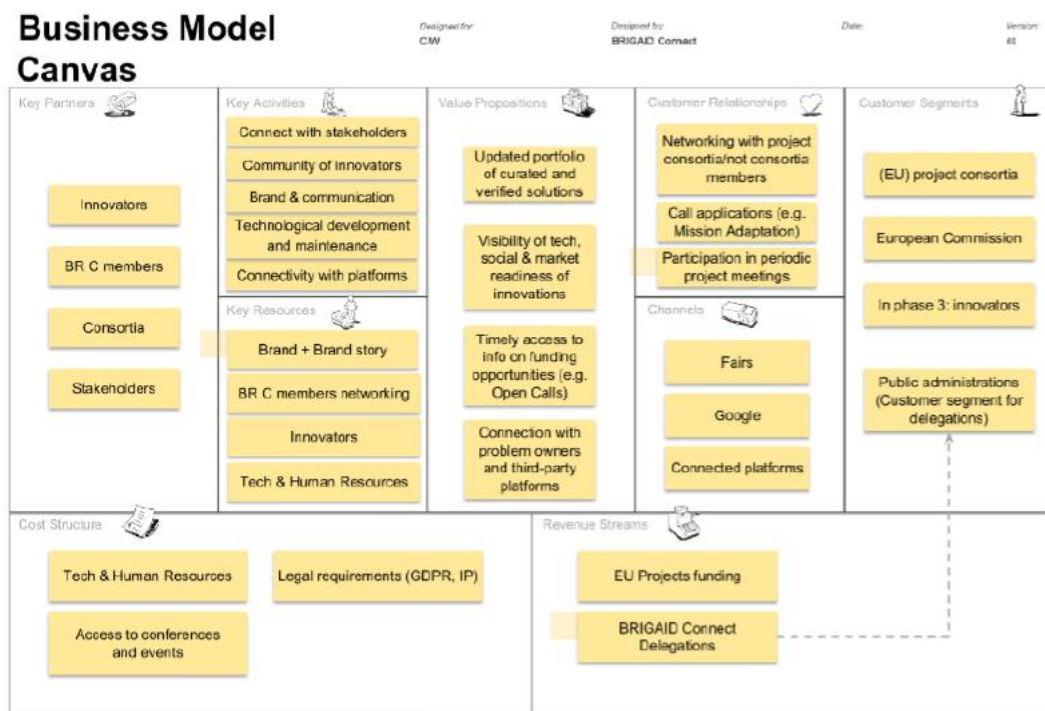


Figure 11 CIW Business Model Canvas

More information about the CIW Business Model is included in the Deliverable 8.7 *Initial sustainability & exploitation plan* of the ARSINOE project. Regarding the weADAPT, it was decided to share its Theory of Change based on their Business Model Canvas.

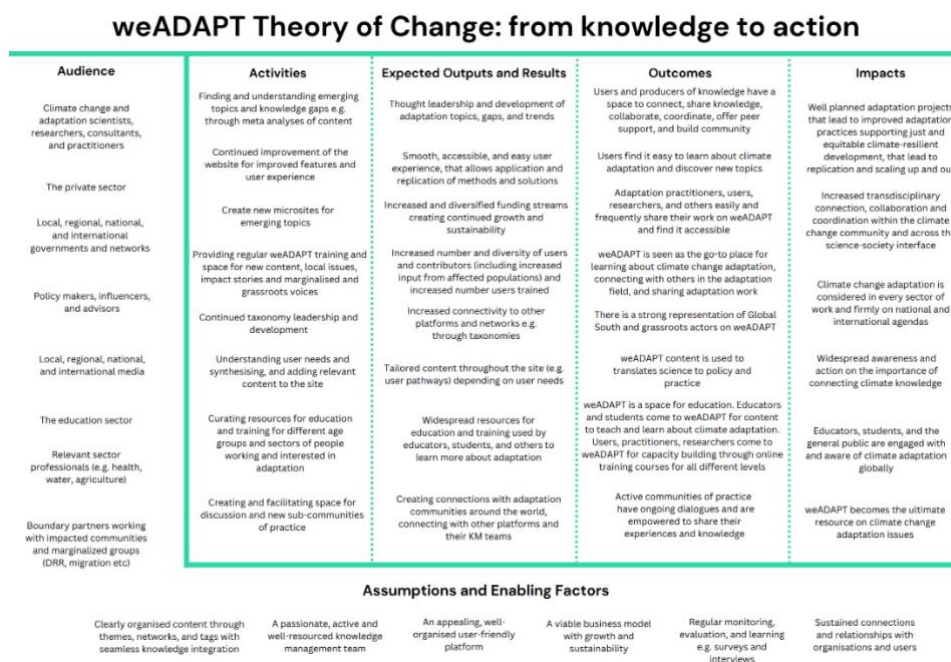


Figure 12 weADAPT Theory of Change based on Business Model Canvas

When comparing abovementioned models, it is evident that despite the fact that they both cover climate resilience as a topic, each offers a unique value proposition, hence there is none or only limited competition for users among these two platforms. The WeADAPT approach and its value proposition is based on developing and customizing microsites for organisations and projects making the content accessible after the project completion. While CIW offers dedicated space on platform for innovators to showcase their innovations and connect with others to increase their visibility and opportunities.

Additionally, both platforms target users with different needs. weADAPT is intended for practitioners, researchers and policy makers, who seek for credible information on climate adaptation issues and who would like to share their own experience with the community created around the portal. CIW adopted different strategy and is focused on a public authorities, innovators (SMEs, start-ups, multinationals and subsidiaries, spin-offs), universities, RTD institutions and investors who are searching for innovative solutions and would like to implement them.

Cooperation with REGILIENCE will be focused on supporting both platforms on diversifying shared content on each platform and as mentioned in previous chapter on attracting more users to leverage their overall value.

7.1 Future steps of the cooperation with selected platforms

- Upgrade of CIW and weADAPT platforms

This support provided may include an upgrade of platforms according to their needs, the incorporation of new tools and functionalities, and improvements to overall platforms' performance. In addition, REGILIENCE will provide specialised training to the platform owners, focusing on modules development, evaluation processes, and effective communication strategies. Furthermore, the monthly meetings will be continued, ensuring a consistent and open channel for



communication and coordination, ultimately strengthening the collective impact of these platforms on climate resilience efforts.

The resources needed for this process are ensured within the REGILIENCE project. This will give each platform the opportunity for further exploitation as well as bring it closer to a wider audience.

- **Analysis of Key Performance Indicators (KPIs)**

During cooperation with CIW and weADAPT, The REGILIENCE will analyse the best possibilities to increase the number of users of knowledge platforms compared to previous systems by 10% and to increase knowledge platforms' usage compared to previous systems by 20%. Both indicators are highlighted as a 2 main impact targets of REGILIENCE project.

To check if the numbers increased it is needed to quantify user reactions during 24 months of cooperation. Specific KPIs related to user growth and platform usage will be established to track the numbers. Examples include the number of new registered users, active users, session duration, content downloads etc. This baseline data will serve as a reference for measuring improvements. Data for 2021 included in reports regarding CIW and weADAPT (annex to this deliverable) are as follows:

NR	TITLE	TYPE OF ANSWER
1	Total page views	11176
2	Total unique visitors	6030
3	Bounce rate	80.92 %
4	Number of users	6030
5	Number of new users	6024
6	Number of sessions	6938
7	Number of sessions per user	1.15
8	Page views	11629
9	Number of pages per session	1.68

Figure 13 CIW platform: 2021 Statistics Dimension

NR	KPI TITLE	TYPE OF ANSWER
1	Total page views	323667
2	Total unique visitors	-
3	Bounce rate	78.85 %
4	Number of users	149631
5	Number of new users	151016
6	Number of sessions	198581
7	Number of sessions per user	1.33
8	Page views	323667
9	Number of pages per session	1.63

Figure 14 weADAPT platform 2021 Statistics Dimension

To measure the success of efforts in increasing the number of users and enhancing platforms' usage, strategy regarding the measurement of Key Performance Indicators (KPIs) will be implemented. Additionally, to mentioned above KPIs, after specific tools and solution uptake, the number of downloaded tools or inquiries will be monitored.

These KPIs will serve as essential metrics to gauge the effectiveness of various steps taken by REGILIENCE to support both platforms.



KPIs will be measured twice during the cooperation period with platforms. During the envisaged 24 months cooperation, REGILIENCE would like to understand the platforms performance and added value of provided support. If the KPIs do not increase, REGILIENCE will redirect support. Assessments will be conducted at two critical points: the initial 12 months following the establishment of cooperation and just before the completion of the 24-month support program. This timeline allows for a dynamic evaluation of progress and facilitates timely adjustments to strategies, ensuring the sustained success of the platforms.

- **Support on communication of both platforms**

To increase the KPIs, REGILIENCE will support both platforms in communication activities:

1. promoting each platform on social media, through resharing of opinion articles, and social media campaigns, among others.
2. providing assistance and training on communication and dissemination tailored for the owners and teams of the platform.
3. adding a section on the REGILIENCE website only for promoting the usage/adoption of the platforms.
4. promoting joint events for the platforms (it is foreseen an open seminar in 2025).
5. disseminating the platforms on the REGILIENCE events.

- **Fostering synergies and strengthening the network of climate resilience platforms**

For future sustainability of selected platforms, it is crucial to facilitate synergies and foster collaboration among them. Fostering synergies will maximize the impact of each platform and may lead to better outcomes. Additionally building synergies will influence efficient utility of resources as REGILIENCE may avoid duplication of activities directed only to one platform. Strengthening the network of platforms will help also to grow each platform as they can build on collective efforts in addressing the resilience challenges. Moreover, building a strong network will allow to influence targeted KPIs and increase them in long term perspective.

One of the strategy goals will be to foster synergies and will be organization of joint online events such as webinars and workshops. These events will provide a space for each platform to share best practices, exchange insights and discuss climate resilience pathways challenges. During cooperation with selected platforms REGILIENCE will explore more possibilities for building synergies and will prepare a strategy considering the needs and possibilities of platforms.

- **Support on linking platforms with Climate-ADAPT**

Both platforms - CIW and weADAPT - have a wide and diverse target audience with different needs. For the purpose of sustainability, tailored support will also embrace support in establishing proper links to the European Climate Adaptation Platform - Climate-ADAPT (<https://climate-adapt.eea.europa.eu/>). Supporting the linkage of platforms with Climate-ADAPT, the European climate adaptation platform, is an important endeavour for sharing and disseminating climate adaptation information. Collaborating with Climate-ADAPT can enhance the visibility and impact of platforms while contributing to the broader goal of climate adaptation. Regular communication and a commitment to common objectives will be key to a successful partnership.

To support establishing links to Climate-ADAPT the following aspects will be considered:

- **Deeper understanding of Climate-ADAPT content**

It is crucial to analyse what kind of data and tools offered by Climate-ADAPT are relevant for CIW and/or weADAPT and might be transferred and or “translated”. Both platforms will analyse the current Climate-ADAPT content and check what content could contribute to further sustainability of CIW and weADAPT.



- **Identification of obstacles and solutions**

Both CIW and weADAPT may undertake careful examination of obstacles that don't allow them to take full advantage of the Climate-ADAPT platform. By identifying and addressing these obstacles, both platforms can ensure a smoother and more productive collaboration with Climate-ADAPT, ultimately enhancing their collective contributions to climate adaptation efforts.

- **“Translating” Climate-ADAPT content**

The Climate-ADAPT platform might be complicated for end-users however its content is very broad, and the platform offers a lot of data and resources on adapting to climate change. The solution for this might be “Translating” useful data and information to non-technical audience by linking content or putting “translated” references/ information on CIW and weADAPT platforms; it could have a mutual benefit – supporting the Climate-ADAPT mission which is to provide access to the necessary adaptation data and information and catalyses the uptake of adaptation solutions and mobilises people and organisations to make adaptation happen² and increase the audience of both selected platforms.

- **Support on establishing a contact with Climate-ADAPT.**

REGILIENCE will support the process of establishing a direct contact and arranging a meeting with Climate-ADAPT to express interest in linking platforms.

The strategy and implementation plan regarding linking with Climate-ADAPT will be built in upcoming months of cooperation with both platforms.

- **Support on linking platforms with MIP4Adapt.**

Except linking CIW and weADAPT with Climate-ADAPT it will be proposed to both platforms to be connected to MIP4Adapt as the one of the platform's goals is to facilitate the alignment of relevant EU-funded projects with the work of MIP4Adapt which is focused on providing support to regions about climate adaptation planning.

MIP4Adapt is relatively new platform which has been set up after establishing cooperation between CIW, we ADAPT and REGILIENCE. REGILIENCE will focus on analysis of the platform, its functionalities and target users to look for synergies with CIW and weADAPT.

² <https://climate-adapt.eea.europa.eu/en/about/climate-adapt-strategy-2022-2024-final.pdf>



8 Cooperation with other platforms

REGILIENCE team is targeting additional platforms to combine their strengths to promote regional resilience tools and solutions for stakeholders and citizens, including the European Climate Adaptation Platform | Climate-ADAPT (<https://climate-adapt.eea.europa.eu/>), and the EU Mission on Adaptation to Climate Change Portal (MIP4ADAPT - <https://climate-adapt.eea.europa.eu/en/mission/the-mission/about-mip4adapt>).

The strategy regarding cooperation with Climate-ADAPT and MIP4ADAPT is different from the one which is being implemented with CIW and weADAPT. This cooperation is being implemented with high-level support of the project coordination.

Climate-ADAPT: REGILIENCE project is cooperating mainly under the strategy, and communication and dissemination pillars. More concretely, under the strategy pillar, REGILIENCE is promoting its connection with weADAPT and CIW taking advantage of communication and dissemination means. WeADAPT and Climate Innovation Window, were encouraged to submit their news and contribute to the quarterly Climate-ADAPT Newsletter. The objective is to feed the Climate-ADAPT Platform and to disseminate the project and supported platforms' news on this privileged platform and communication channels.

MIP4Adapt - EU Mission on Adaptation to Climate Change Portal is integrated into the Climate-ADAPT platform and is dedicated to support European regional and local authorities in preparing and planning climate resilience strategies. For Charter Signatories, MIP4Adapt functions as a Community of Practice, providing technical assistance to enable regions and local authorities to utilize existing climate vulnerability and risk assessments for the development of adaptation plans. Additionally, it supports the identification of suitable climate adaptation demonstration projects and helps access financial support for implementation. MIP4Adapt's mission extends to fostering citizen and stakeholder engagement, promoting inclusive approaches to climate adaptation throughout the planning and implementation process. The REGILIENCE project is cooperating with the platform by different means, under the strategy and communication & dissemination pillars. More concretely, REGILIENCE is already contributing to the MIP4Adapt Newsletter, resharing its social media posts. Additionally, REGILIENCE is in close strategical conversations to integrate some tools and solutions provided by the 4 projects in the platform.

Below, is presented a print screen of the REGILIENCE news in the MIP4Adapt Newsletter from October 2023³, where the project demonstrated the training about the Climate Risk Management policy cycle, based on the Adaptation Support tool (developed by Climate-ADAPT).

³ <https://ec.europa.eu/newsroom/clima/newsletter-archives/48562>



First training course on climate risk management a huge success.

Sixteen climate risk practitioners successfully concluded this intensive six-day course, where they were introduced to some of the most relevant tools and frameworks available for developing Climate Risk Management activities.



Each day focused on some of the specific aspects of the Climate Risk Management policy cycle, as illustrated in the [Adaptation Support tool](#) of Climate-ADAPT. These included: (1) preparing the ground for climate adaptation action; (2) identifying climate risks and response options; (3) evaluating, implementing and monitoring options; and (4) communicating, engaging and reporting to different audiences. The training was a mixture of lectures, workshops, case studies, a field trip and interactive discussions.

The initiative was promoted by the [University of Lisbon](#) and the [REGILIENCE](#) project, with the support of the European Union under the NextGenerationEU [Recovery and Resilience Facility](#) and the [EU Mission on Adaptation to Climate Change](#).

[Read the full article.](#)

Figure 15 Screenshot of REGILIENCE news in the MIP4Adapt Newsletter, including the reference to the Adaptation Support Tool

During this course, there was a specific moment, presented by the REGILIENCE Partner - Fresh Thoughts, where 4 platforms were presented, including their added value, features and main functionalities.



Figure 16 Photo from Central Macedonia region presentation

Both platforms are being invited to be speakers at the REGILIENCE organized events and REGILIENCE is supporting several events organized by MIP4Adapt as a speaker. Below is presented print screen of ICLEI presenting our Cluster management good practice in the event “Mission's Community - Synergy Workshop for Mission projects” organized by MIP4Adapt, which took place on the 9th of November 2023.

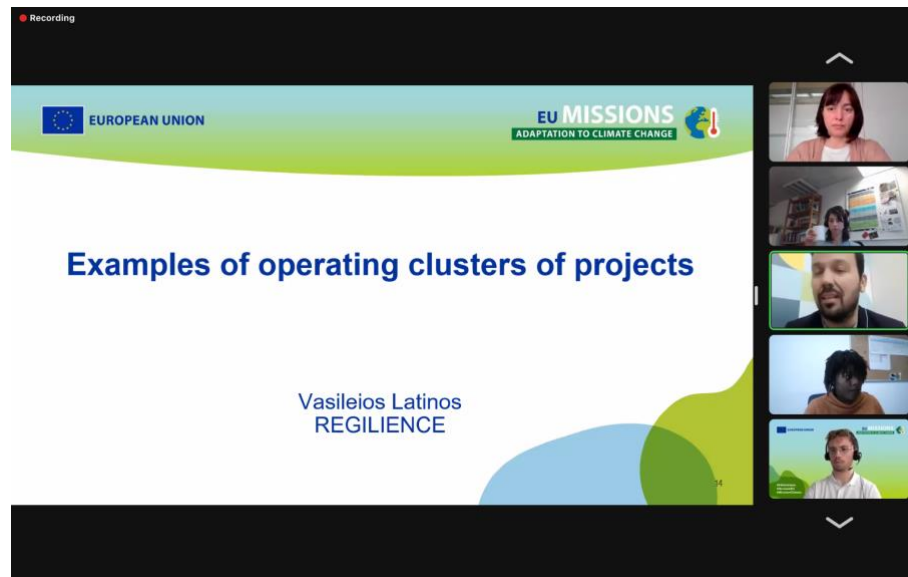


Figure 17 Screenshot from the workshop

REGILIENCE is also supporting MIP4Adapt by promoting events with our cooperation. Below is the example of the Webinar flyer focusing on the Maladaptation tool developed under the REGILIENCE project:

#EUmissions
#HorizonEU
#MissionClimateAdaptation



EU MISSIONS
ADAPTATION TO CLIMATE CHANGE

MISSION ADAPTATION SERIES

SPOTTING THE RISK OF MALADAPTATION TOGETHER

THURSDAY 7 DECEMBER, 12:30 – 14:00 CET

WEBINAR HIGHLIGHTS

- Introduction to the concept of maladaptation and why it matters in every climate adaptation project. Maladaptation is when adaptation goes wrong or actions have direct or indirect negative outcomes and are usually unintended.
- Hands on: Applying the maladaptation checklist together in an urban heat example.
- Q&A session to clarify any questions around the concept of maladaptation and spotting risks in the planning phase.

WHO SHOULD ATTEND

This webinar is designed for a diverse audience including professionals, academics, and projects interested in climate adaptation. It aims to provide support to those involved in creating adaptation strategies for their local authority or region.

JOIN US ONLINE

In this lunch time webinar, we explore how to reduce the risk of failing to adequately adapt to climate change. This webinar will be presented by Teresa Geidel, a researcher at Fresh Thoughts Consulting.

[REGISTER HERE](#)

Figure 18 “Spotting the risk of maladaptation together” webinar flyer.



9 Conclusion

The consortium, and particularly F6S as the leading partner of WP 2 “Tools and Solutions for implementing innovation packages in regions” is committed to providing support for both selected platforms to enhance these platforms and transforming them into invaluable sources of practical knowledge and tools for regions, facilitating the effective implementation of resilience pathways.

The ongoing collaboration between the project and the platforms has proven highly fruitful, highlighting the promising synergies that are driving progress towards our shared objectives. REGILIENCE has demonstrated its effective support in addressing the unique challenges faced by the specific platforms CIW and weADAPT. The collaboration with climate-ADAPT and MIP4Adapt has steadily strengthened over time, with growing synergies and experience. This positive trajectory underscores the valuable contribution of REGILIENCE in fostering collaboration, enhancing platform capabilities, and collectively advancing our shared goals in the realm of climate adaptation and resilience. The ongoing cooperation holds great promise for continued success and impactful outcomes in the evolving landscape of climate action.

For the 24 months cooperation period, the sustainability plan for both platforms will be periodically reviewed and updated. Additional steps to increase the KPIs and other important aspects of cooperation will be considered based on the implementation of REGILIENCE. A final version of the strategy will be included in the upcoming deliverable – D.2.2 New platform or enhancement tools.