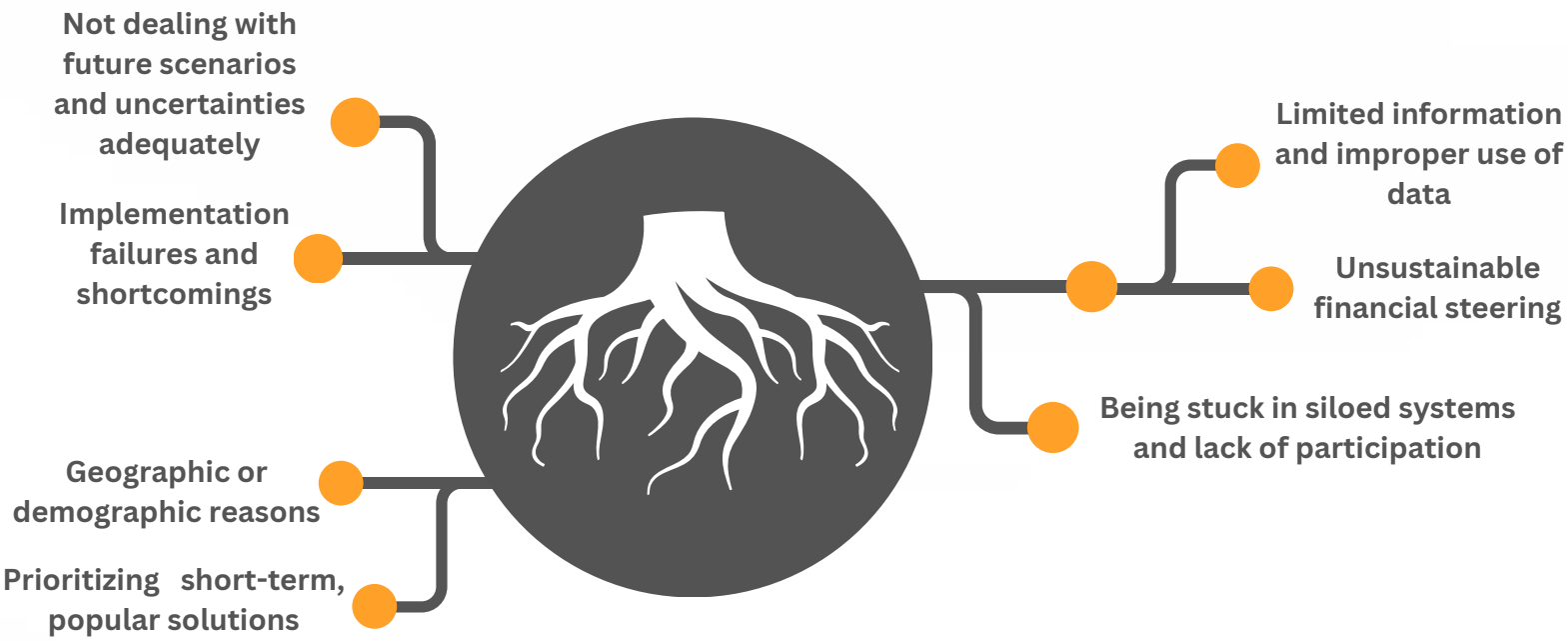


CLIMATE MALADAPTATION

MALADAPTATION REFERS TO THE PROCESS THAT AN INTENTIONAL ADAPTATION ACTION MAY LEAD TO NEGATIVE EFFECTS WHICH INCREASE VULNERABILITY, DIMINISH WELLBEING OR UNDERMINE SUSTAINABLE DEVELOPMENT.

ROOTS AND CAUSES OF MALADAPTATION



RISK FACTORS OF MALADAPTATION

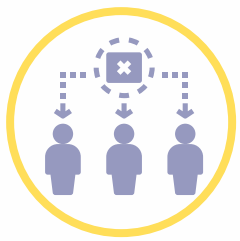
THE PROCESSES LEADING TO MALADAPTATION AND POTENTIAL MALADAPTIVE OUTCOMES ARE DIVERSE. BUT THERE ARE 5 CATEGORIES OF SPECIFIC RISK FACTORS THAT CAN BE IDENTIFIED.



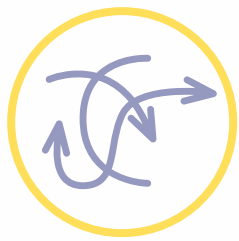
Lack of effectiveness



Insufficient knowledge and understanding



Lack of mainstreaming and coordination



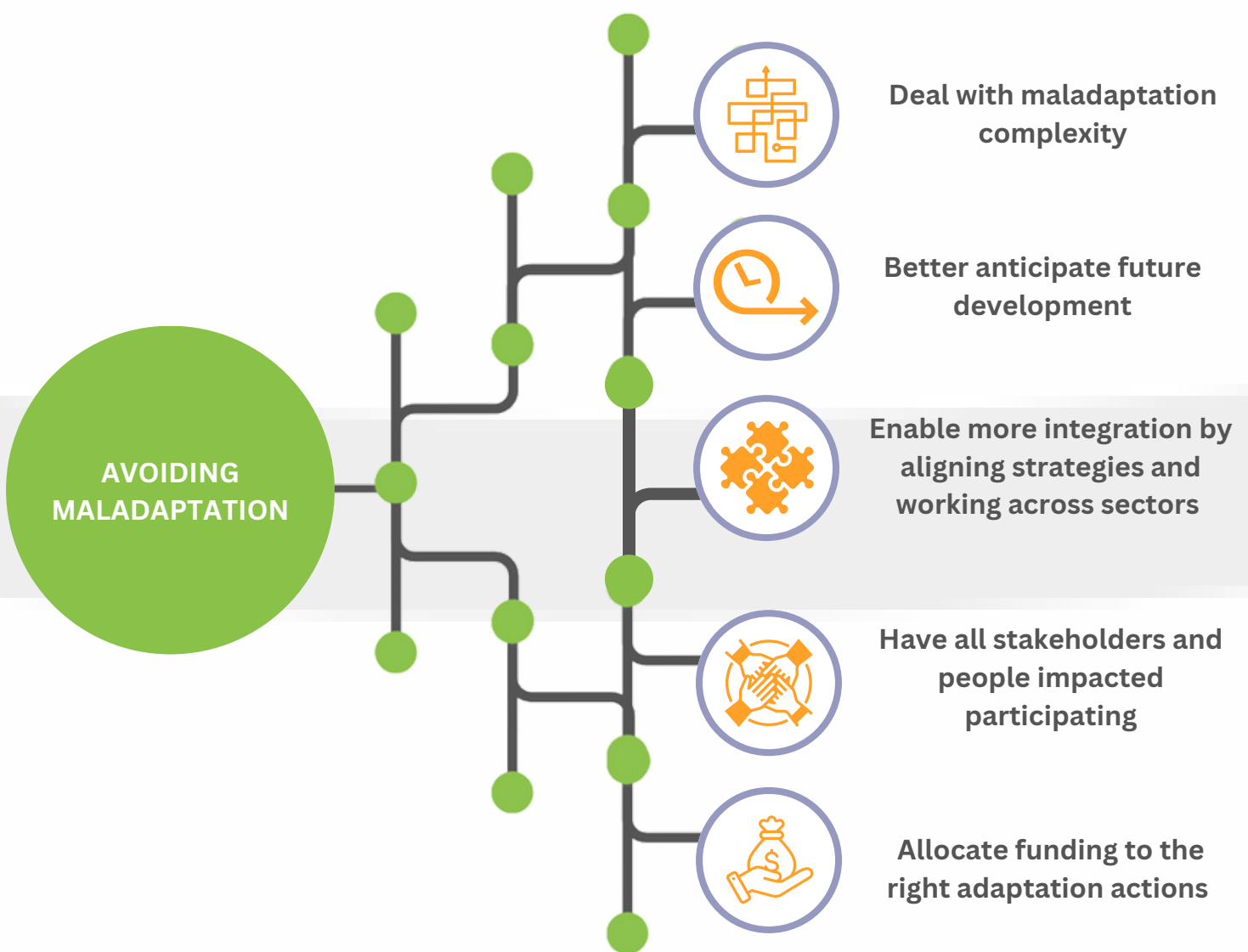
Lack of sustainability and path dependency




Lack of relevance

RECOMMENDATIONS ON HOW TO AVOID MALADAPTATION IN PRACTICE

AVOIDING MALADAPTATION BEFORE THE IMPLEMENTATION OF AN ADAPTATION ACTION IS POSSIBLE THROUGH ADDRESSING POTENTIAL RISK FACTORS.




DISCOVER THE SELF- ASSESSMENT TOOL FOR MALADAPTATION ON OUR WEBSITE:
WWW.REGILIENCE.EU

 info@regilience.eu

 @regilience

 <https://linkedin.com/company/regilience>

 <https://facebook.com/regilience>