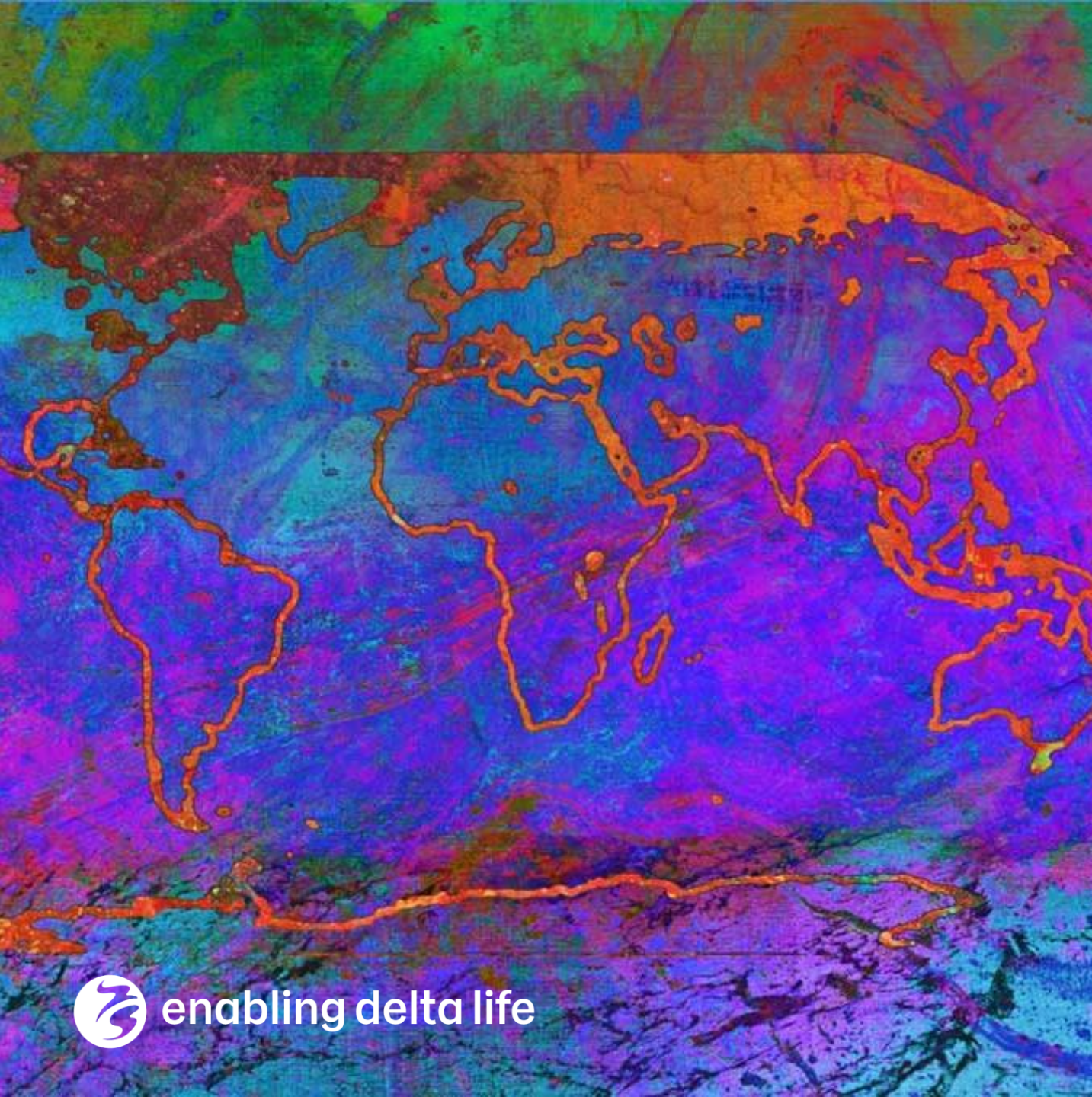




Co-funded by
the European Union



CLIMAAX
climate ready regions



CLIMAAX

*CLIMate risk And vulnerability
Assessment framework and
toolboX*

Frederiek Sperna Weiland
Bart van den Hurk

EU Mission on Adaptation: Accelerate and Demonstrate Transformations to Climate Resilience

Many challenges



Multiple
data sources

Our motto:
standardized flexibility

Many regions



The pillars of CLIMAAX



Framework for regional CRA

→ supporting civil protection and climate adaptation

Toolbox and pilots

→ testing data needs and diversity of requests

Cascading fund

→ Financial support for >50 regions

CLIMAAX

Climate ready regions

The CRA framework

Norms & principles

- Inventory of experience, best practices
- Consultation in regions & sectors

Practical guidance

- Past and future trends
- Risk indicators & viewpoints

Follow-up

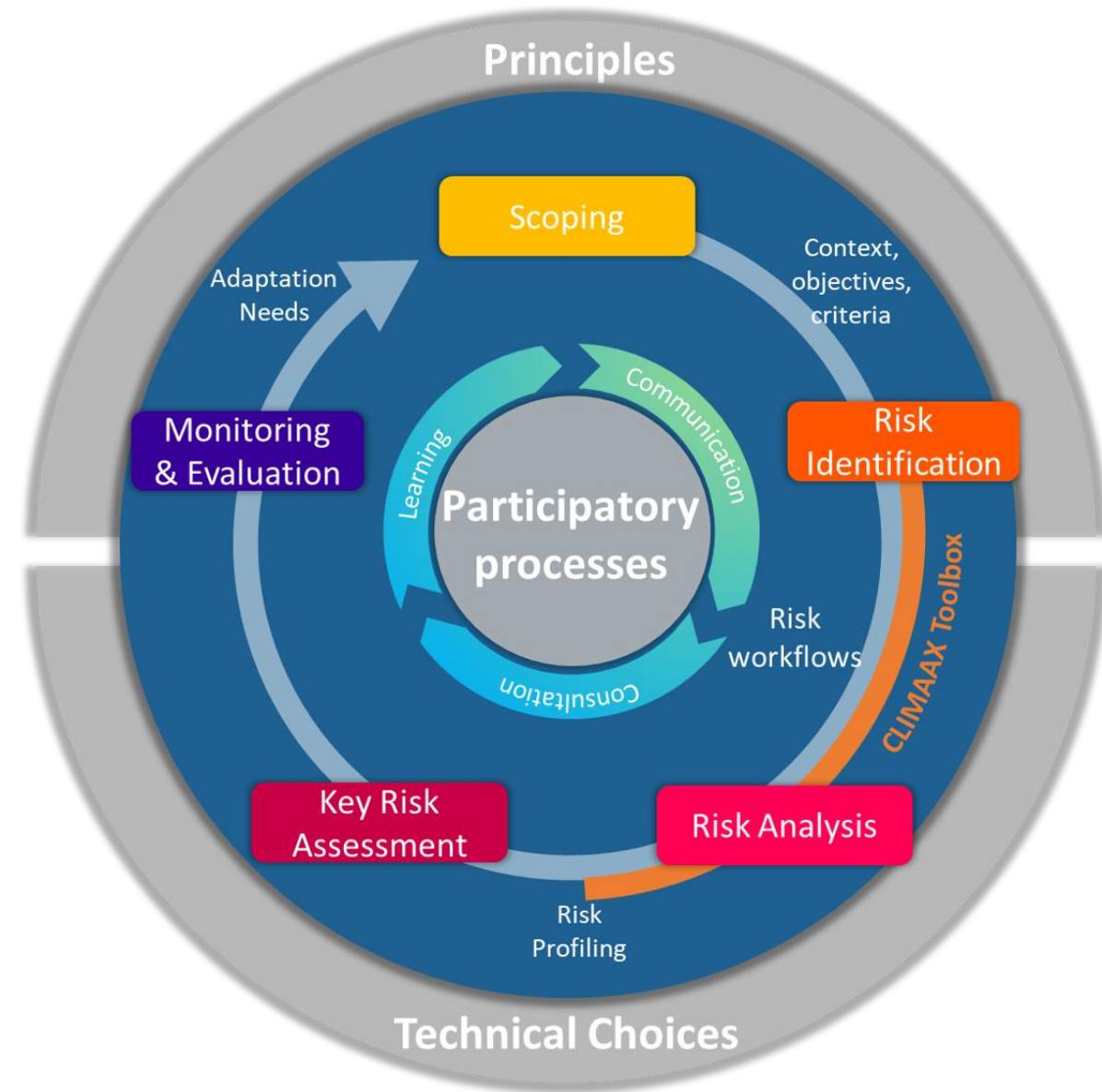
- Uptake into DRM and climate adaptation strategy



The CRA framework

Guidance on:

- Stakeholder engagement processes
- Selection of hazards
- Use of data and concepts
- Selection of indicators
- Use of climate and socio-economic scenarios



The pillars of CLIMAAX



Toolbox and pilots

→ testing data needs and diversity of requests

CLIMAAX

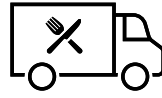
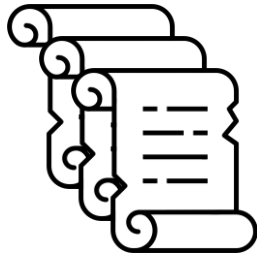
Climate ready regions

The CRA toolbox principles

- **Base-layer:** regional climate / exposure / vulnerability data from Pan-European datasets (non-expert users ~ JRC RDH)
- **Dashboard layer:** online risk assessment tools for local data (local user)
- **Download layer:** local manipulation of all scripts and data (advanced user)



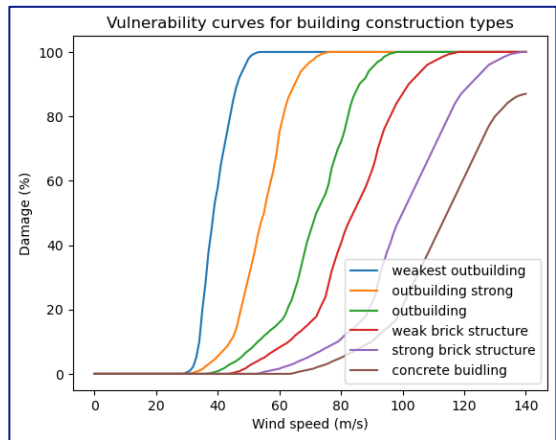
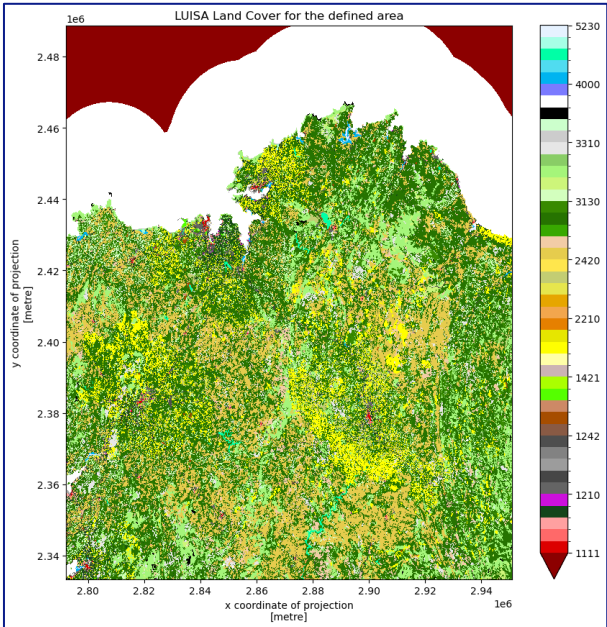
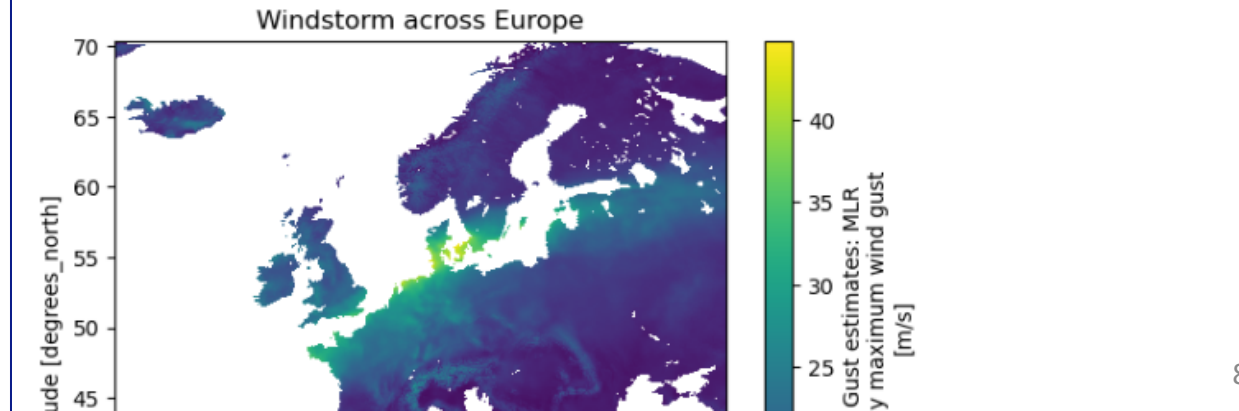
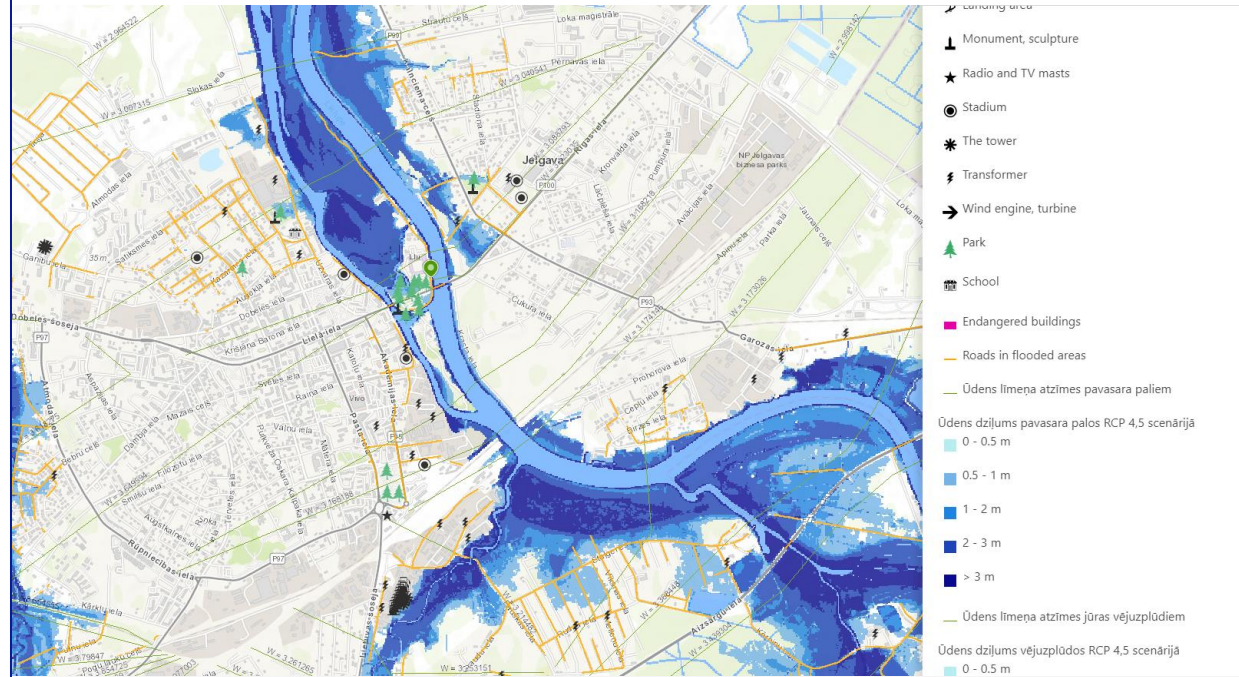
First design: The recipes



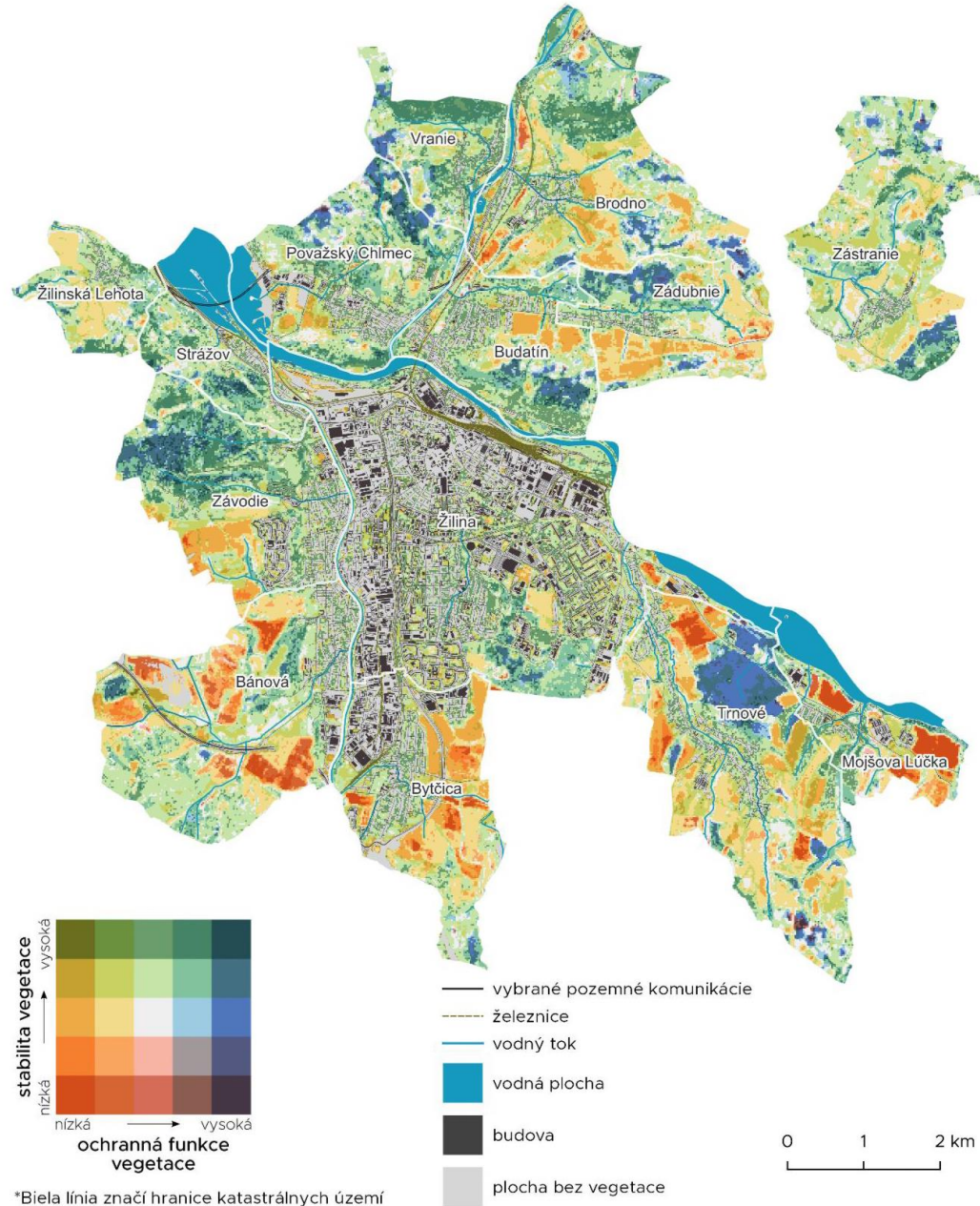
- Exploring data by Hazard, Exposure and Vulnerability
- Connecting to a.o. CDS, JRC RiskDataHub

Hazard data

The downloaded storm footprints can be visualised to get an overview of what it in the dataset. First, we need to open the storm footprint from the downloaded zipfile. Then we change the dimension from latitude and longitude to y and x so we can work with and manipulate the data later. Then, we need to set the CRS of the dataset since that has not be predefined by the Copernicus Climate Data Store. Before plotting we need to select the right variable to plot ('FX') and specify the band of interest, in this case there is only one so that is easy (z=1)

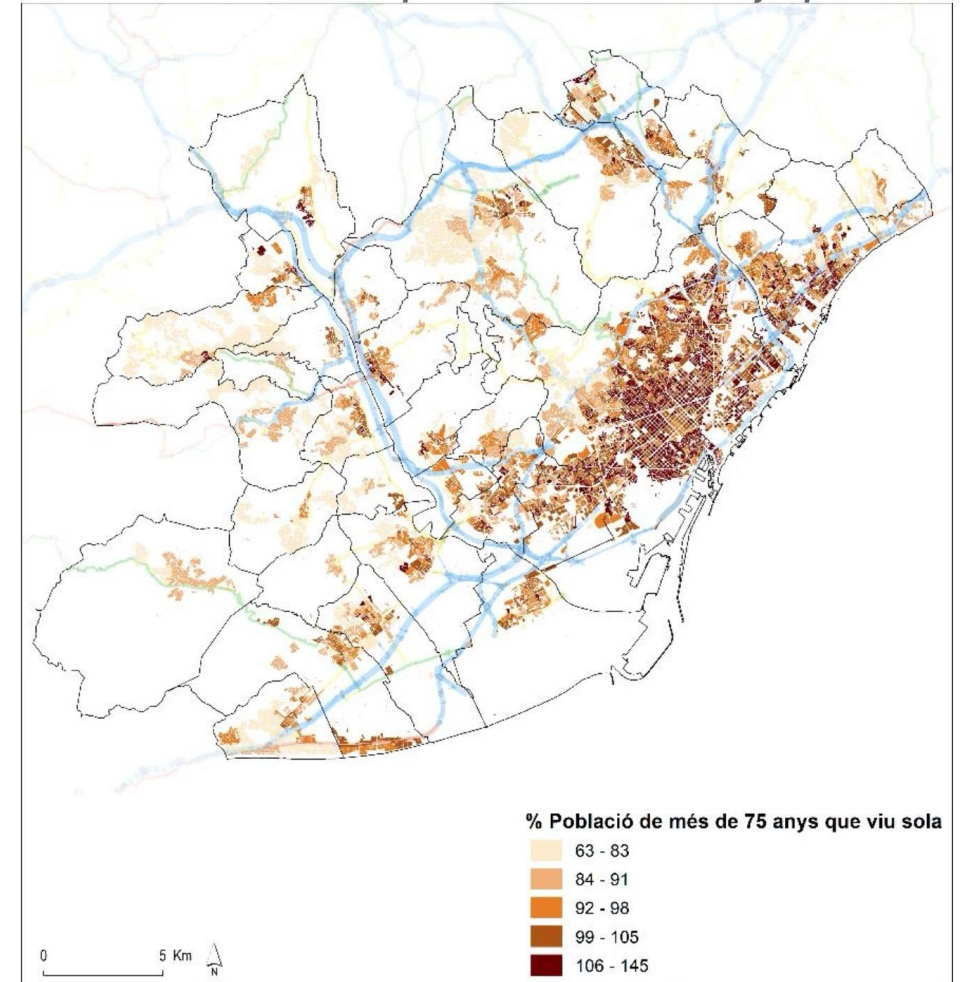


Žilina city vegetation



% of Population over 75 years that lives alone in Barcelona Metropolitan Area (2018): IERMB from IDESCAT

Mapa 3.10. Indicador normalitzat del % de població de més de 75 anys que viu sola. 2018.



Nota: Mètode de normalització: $\mu = 100$ i $\sigma = 10$.

Font: IERMB a partir de Padró municipal d'habitants, IDESCAT.

Learning by doing

5 Pilot regions

- Site visits revealed key issues
- Helping with shaping toolbox & application
- European level comparison



Learning by doing

5 Pilot regions

Demo for applicants

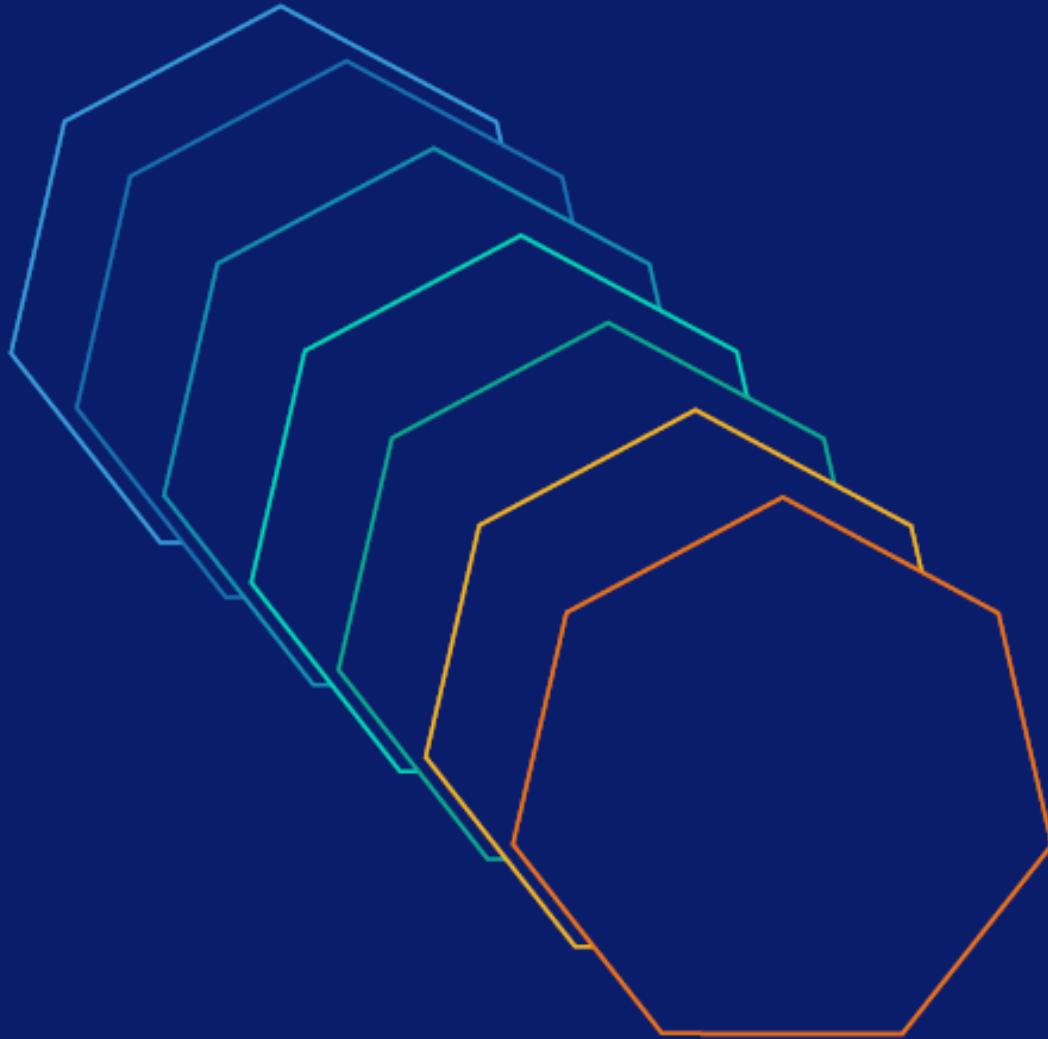


Demo workshop
~29-31 January
Setubal (PT) + online



Co-funded by
the European Union

The pillars of CLIMAAX



Cascading fund

→ Financial support for >50 regions

CLIMAAX

Climate ready regions

The cascading fund

Financial support for regions

- At least 60 regions & communities
- Criteria include diversity and needs

Formal call procedure

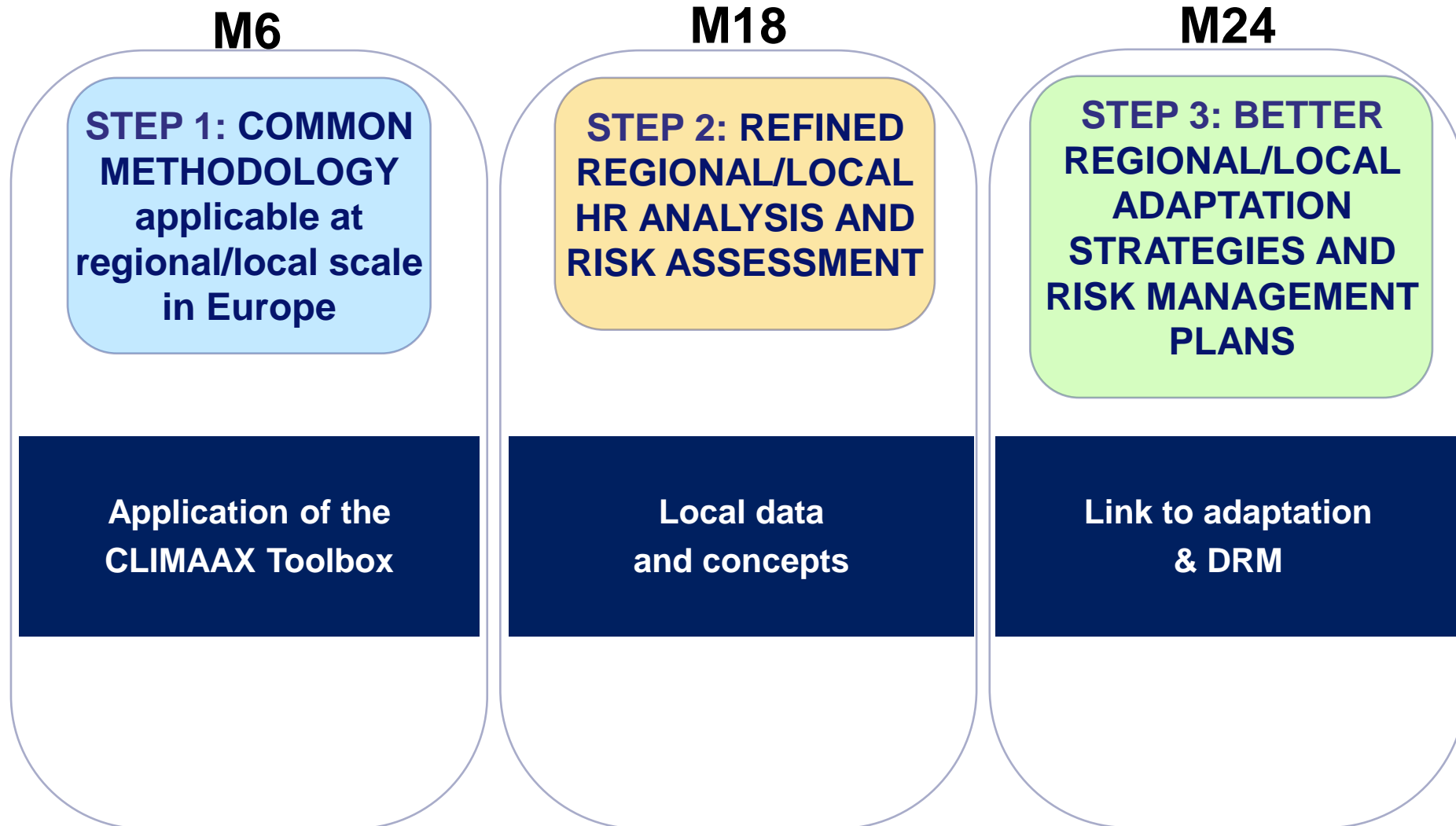
- Selection procedure & criteria
- Online application form

1st Call open 8 Dec 2023 – 8 March 2024

- 2 rounds
- 2 year projects finalize autumn 2026



Financial Support for Third Parties



IMPLEMENTATION IN > 60 regions/municipalities/communities



What CLIMAAX Open Call beneficiaries will receive

- A **lump sum funding** per region to implement a multi-risk climate assessment
- Access to the **operational supporting Toolbox**
- **Guidance and support** through the CLIMAAX helpdesk
- Access to **networking exchange** of best practices



Contact info

<https://www.climaax.eu>

<https://climaax-call4regions.fundingbox.com/>

info@climaax.eu



The CLIMAAX project is funded by the European Union under Grant agreement ID 101093864. This publication was funded by the European Union. Its contents are the sole responsibility of the author(s) and do not necessarily reflect the views of the European Union.

