



IN-PLAN

Integrated energy, climate and spatial planning

From plans to reality – Spatial plans as a tool for implementation

Tomislav Novosel

REGEA

10.12.2024



Co-funded by the European Union under project ID101076428. Views and opinions expressed are however those of the author(s) only and do not necessarily reflect those of the European Union or CINEA. Neither the European Union nor the granting authority can be held responsible for them.

Challenges



Lack of capacity and mechanisms to enact and enforce binding energy and climate policies on a local or regional level



Lack of vertical and horizontal integration or alignment of strategies, plans, and policies



Lack of a systemic, integrated, and consistent approach to energy and climate planning



Lack of alignment between planning and the allocation of financial resources

Planning



Implementation



SECAP

Now?



Then?

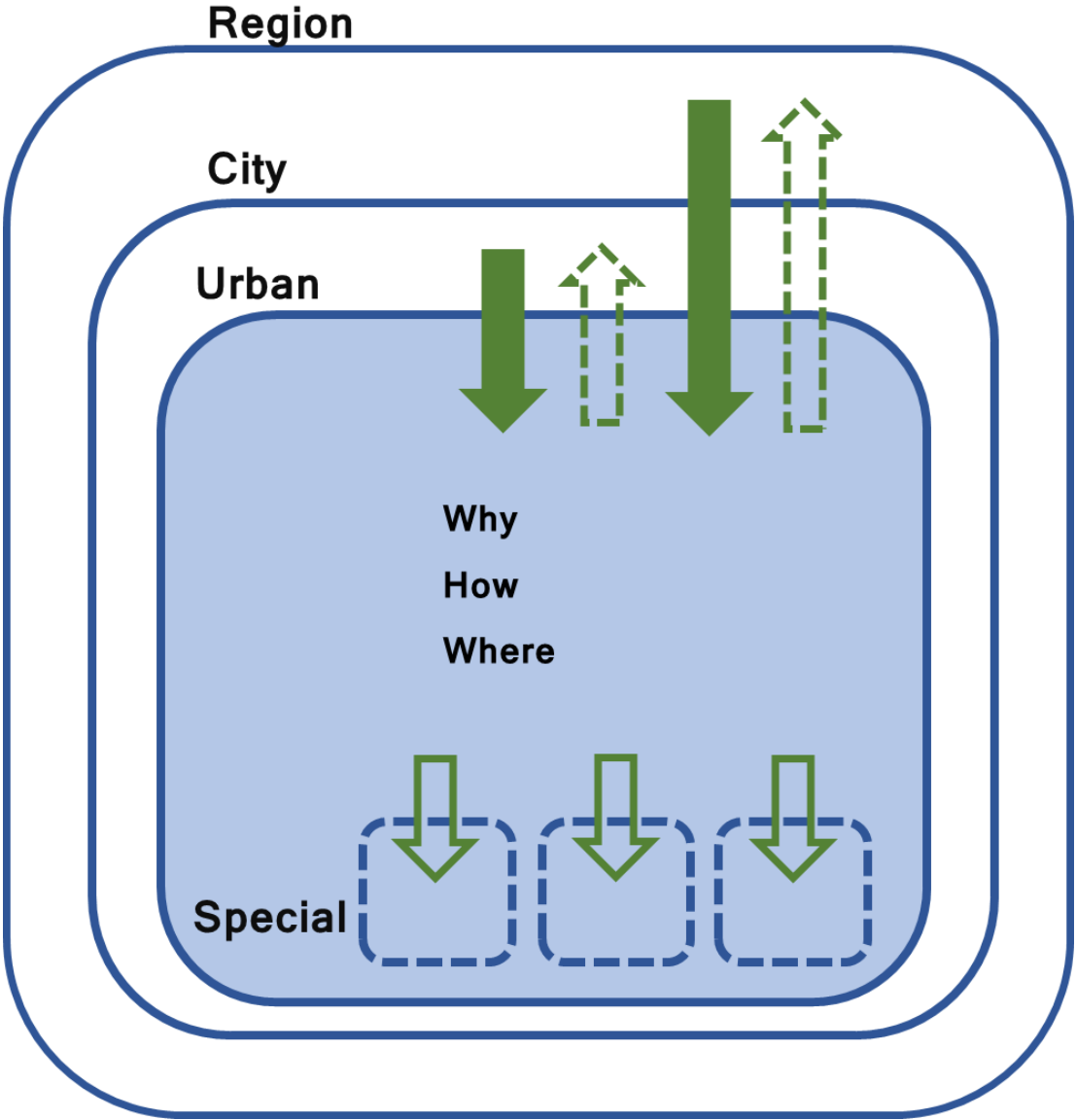


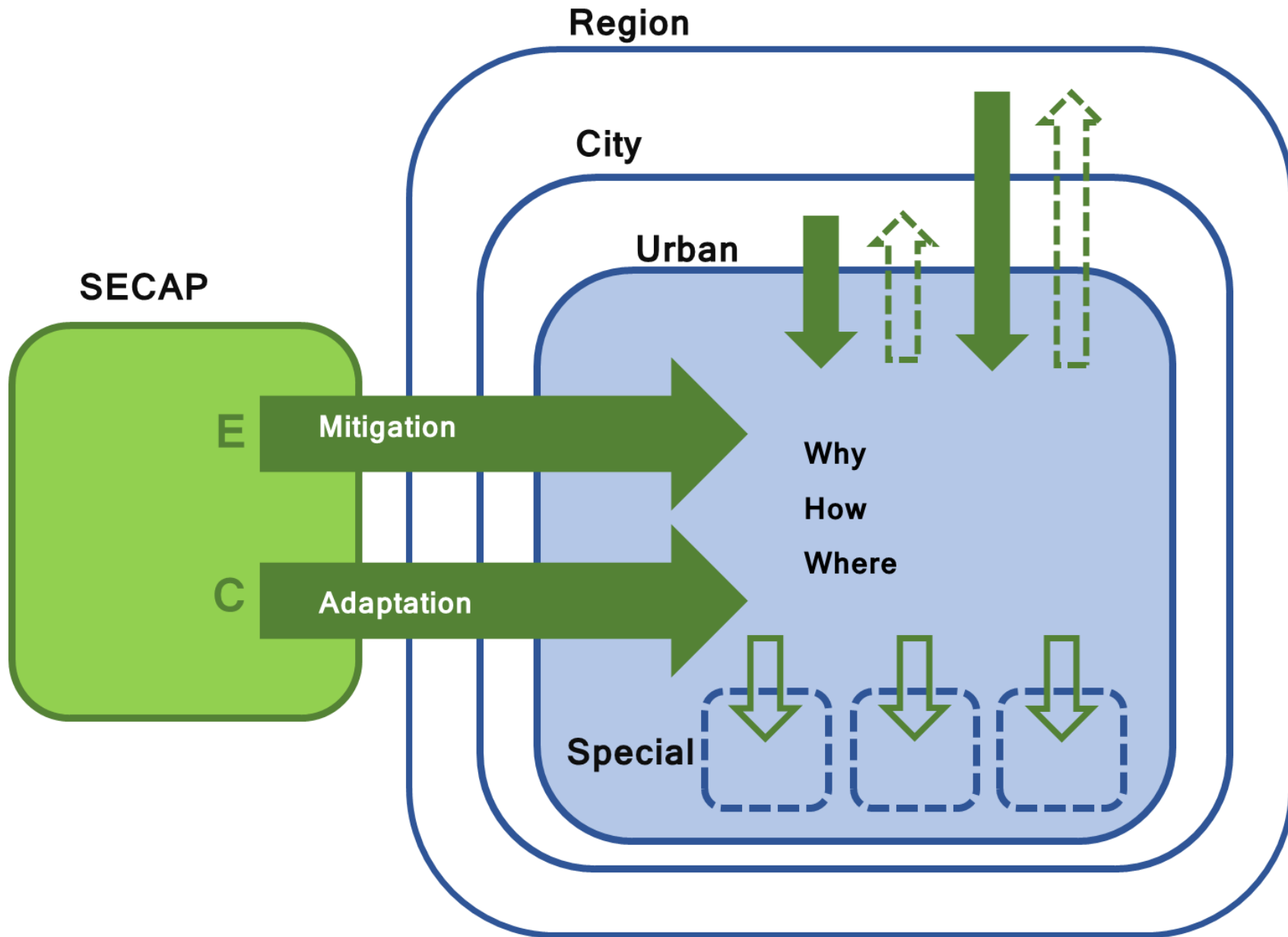
**Baseline
emissions
inventory**

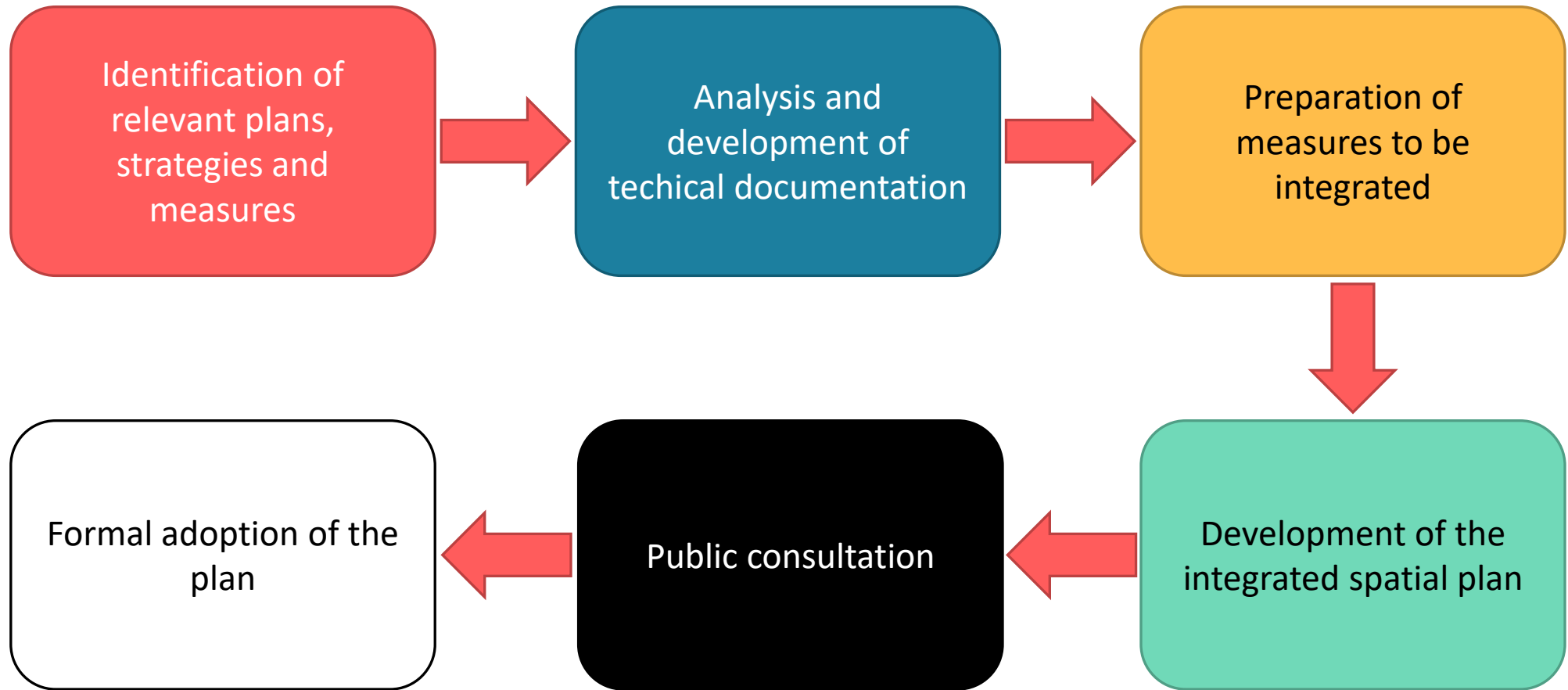
Activities

Concrete actions,
resources, monitoring
and verification

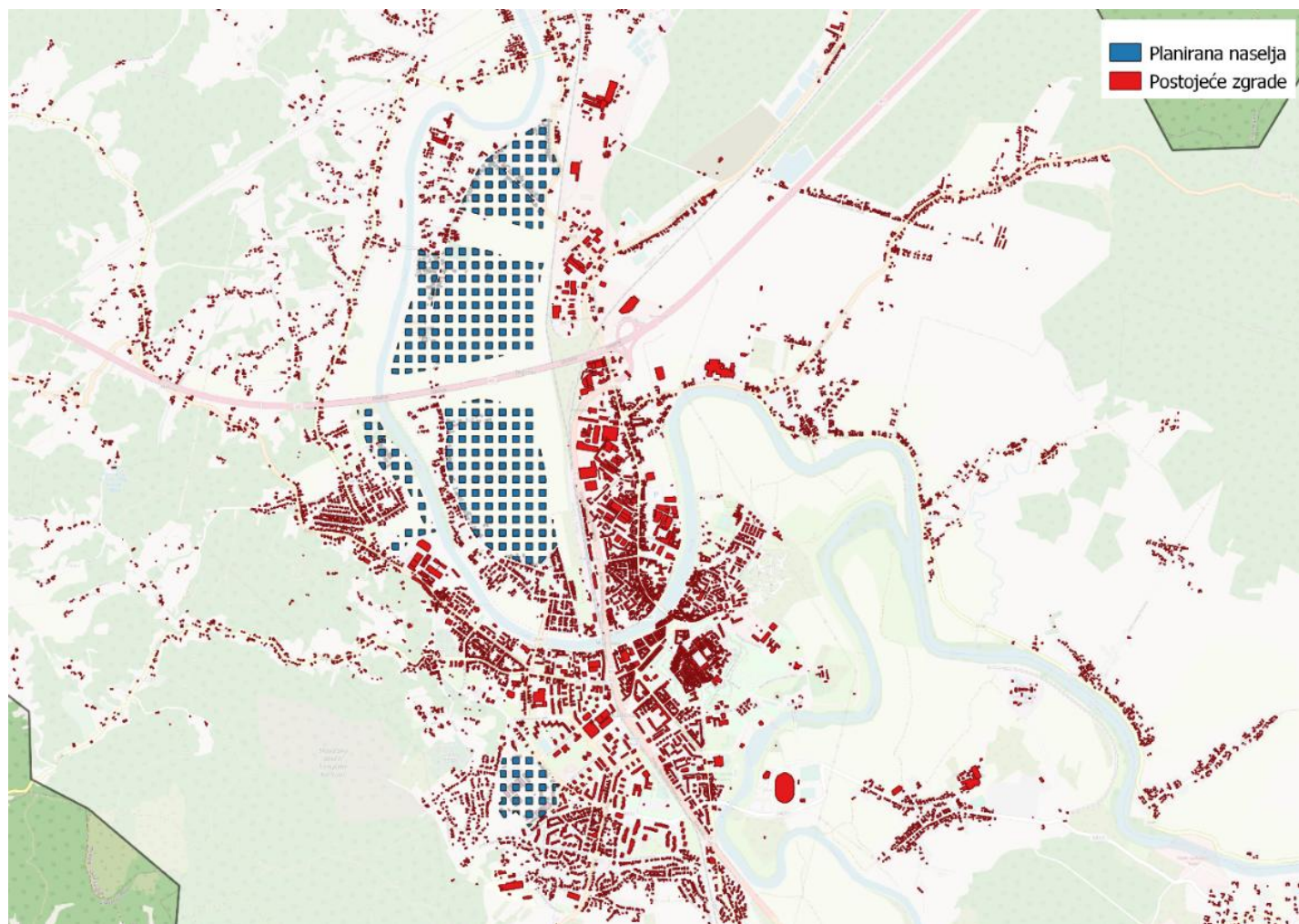
**Visions and
goals**

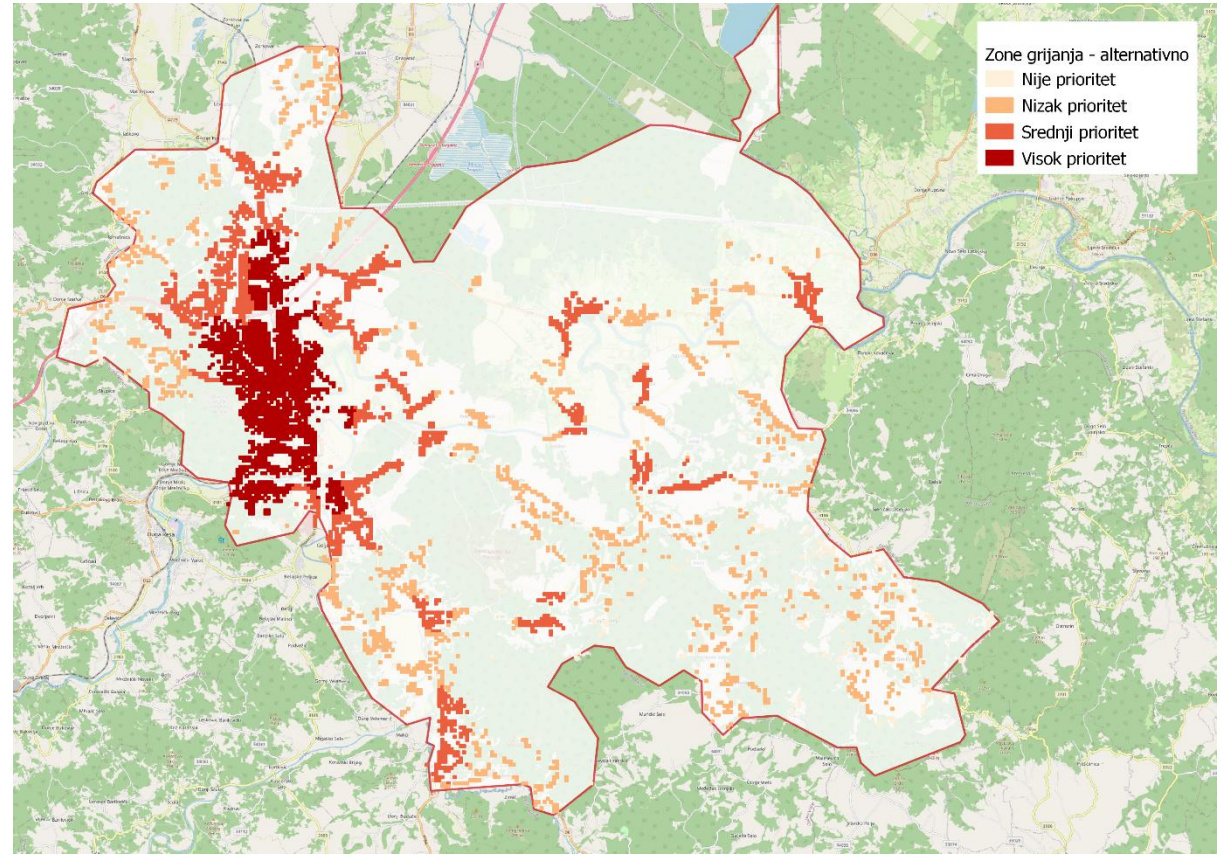
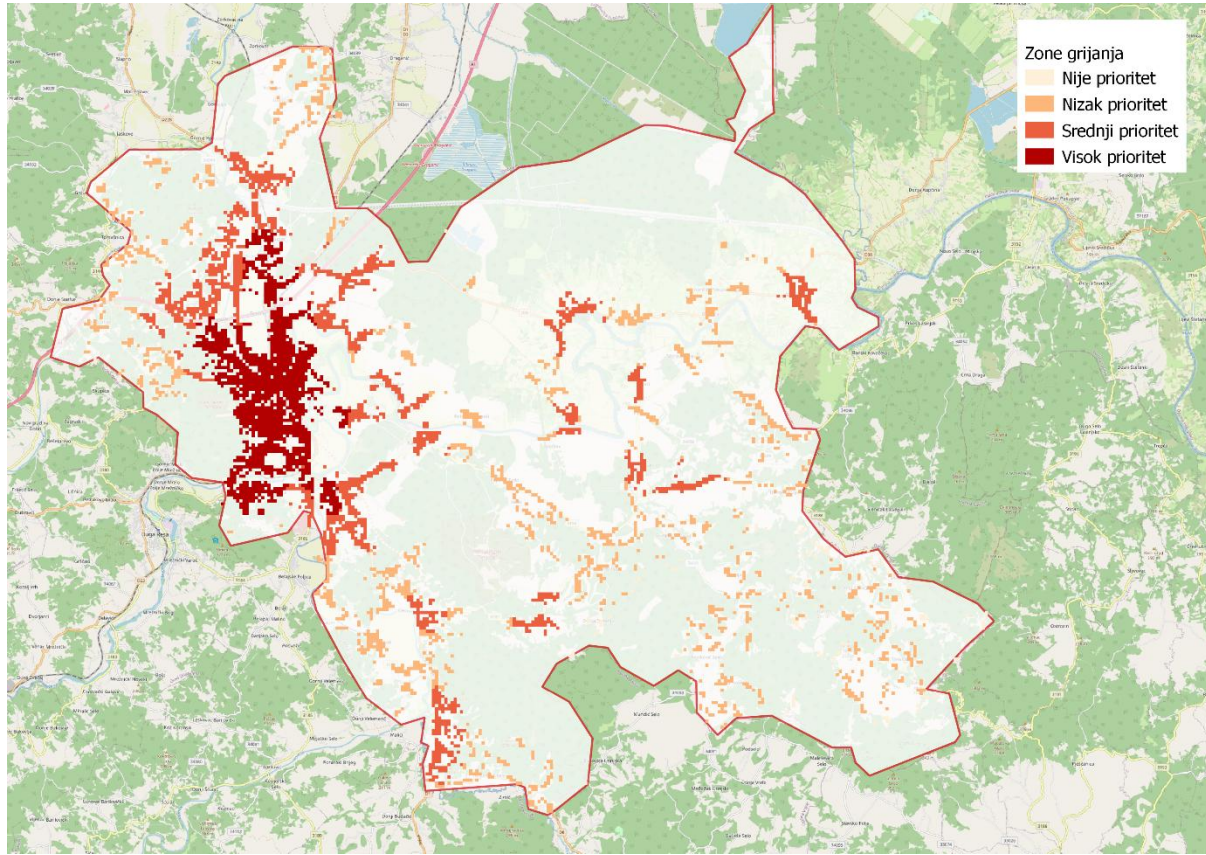


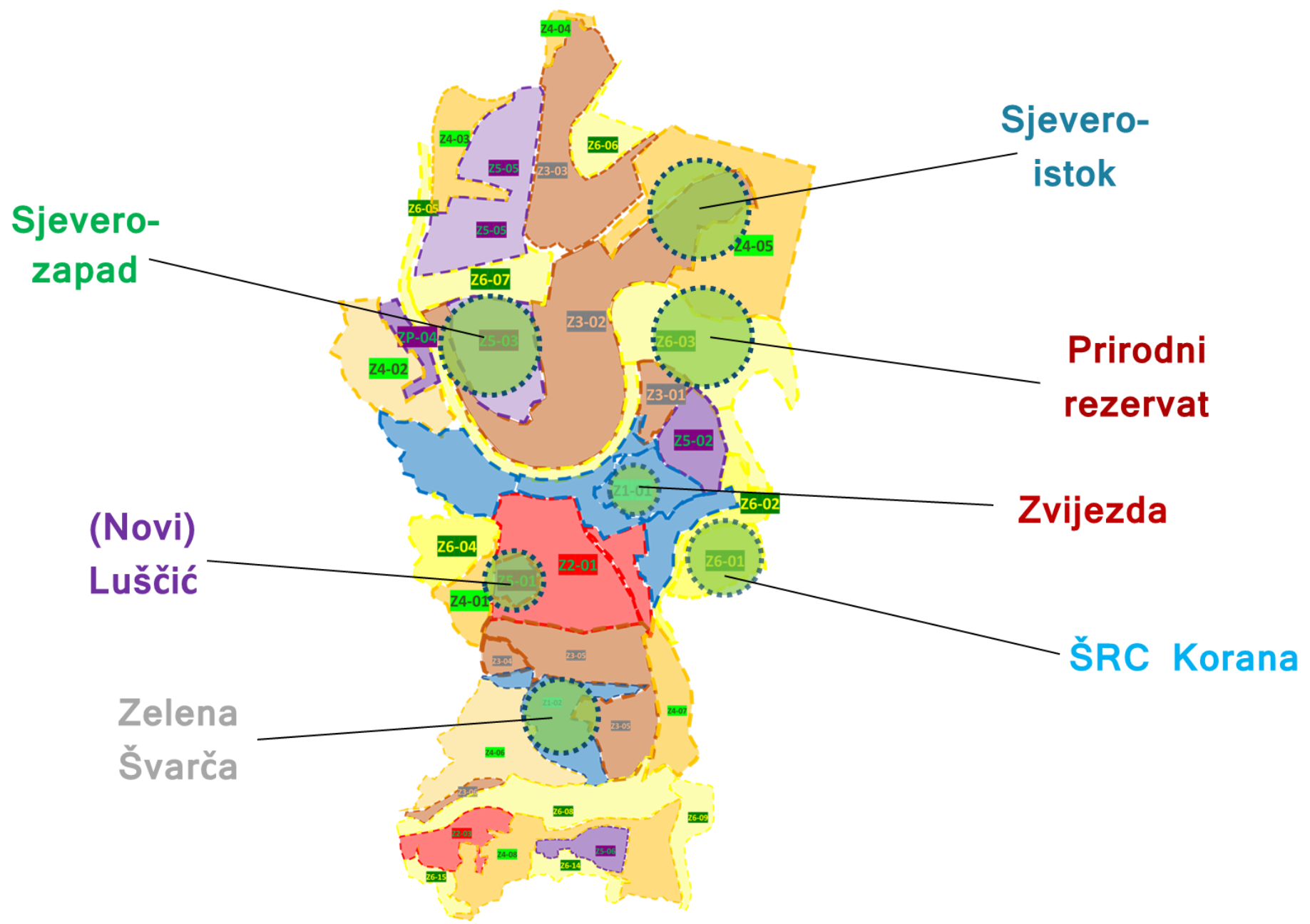




Continous communication and cooperation with the City and the developers of the spatial plan







Sjeverozapad

Sjevero-istok

Prirodni rezervat

(Novi) Lušćić

Zvijezda

Zelena Švarča

ŠRC Korana

Identification of areas of intervention

Climate change mitigation

- Energy efficiency of buildings
- Heating and cooling supply
- Supply of electricity
- Street lighting

Climate change adaptation

- Green infrastructure, biodiversity and urban heat islands
- Flood prevention, landslides and water management

Mobility

- Mobility at rest
- Infrastructure

Waste?

Barriers to Integration

- Responsibilities and budgets split across various entities and Departments and levels of government
- Different levels and sectors of Government have different priorities
- Coordination at Government level is weak which gives rise to poor coordination at local level
- Understanding of cause and effect with regard to many matters is weak
- Policy and planning instruments can be vague, uncertain and contradictory
- Policy and funding control are in different hands
- No rewards for integrating or penalties for not

Successful examples of integrated planning

Vienna (Austria) – integrated spatial and energy planning

Karlovac (Croatia) – sub-urban spatial plan Luščić and the cities General Urbanistic Plan

Križevci (Croatia) – sub-urban spatial plan Kosov Breg

Zagreb (Croatia) – sub-urban spatial plan Badel and the cities General Urbanistic Plan





Thank you.

For more info, follow our hashtag, visit our website or contact us:



#LifeINPLAN



fedarene.org/project/in-plan/



tnovosel@regea.org



Co-funded by the European Union under project ID 101076428. Views and opinions expressed are however those of the author(s) only and do not necessarily reflect those of the European Union or CINEA. Neither the European Union nor the granting authority can be held responsible for them.