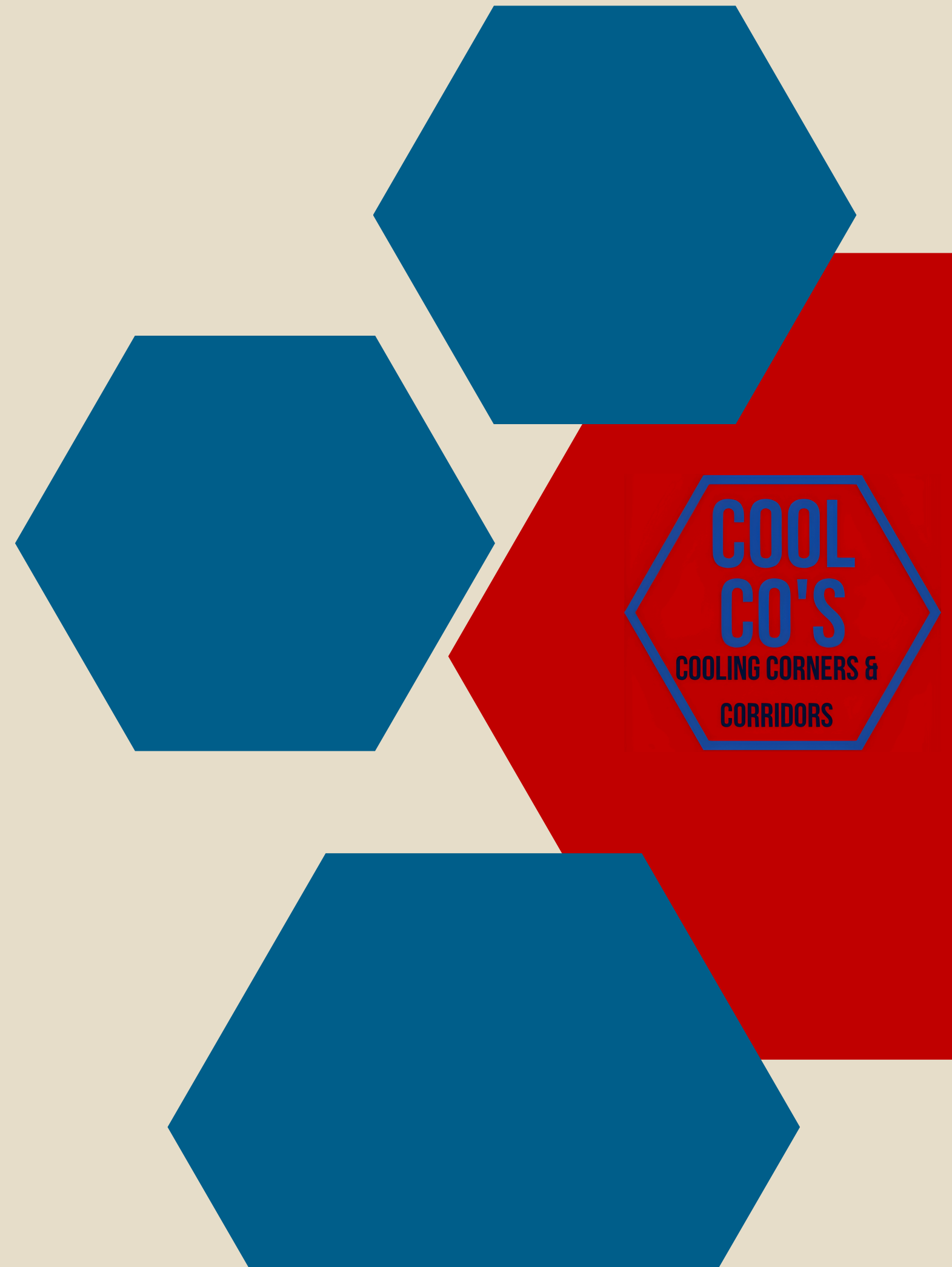


CoolCo's - Cooling Corners and Corridors

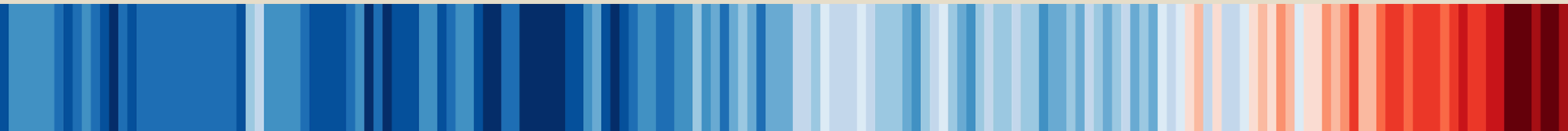
Ready for the next heatwave?

CoolCo's urban transformation to foster
heat adaptation among vulnerable
populations

Zsófia Anna Ghira, PhD - 07.04.2025



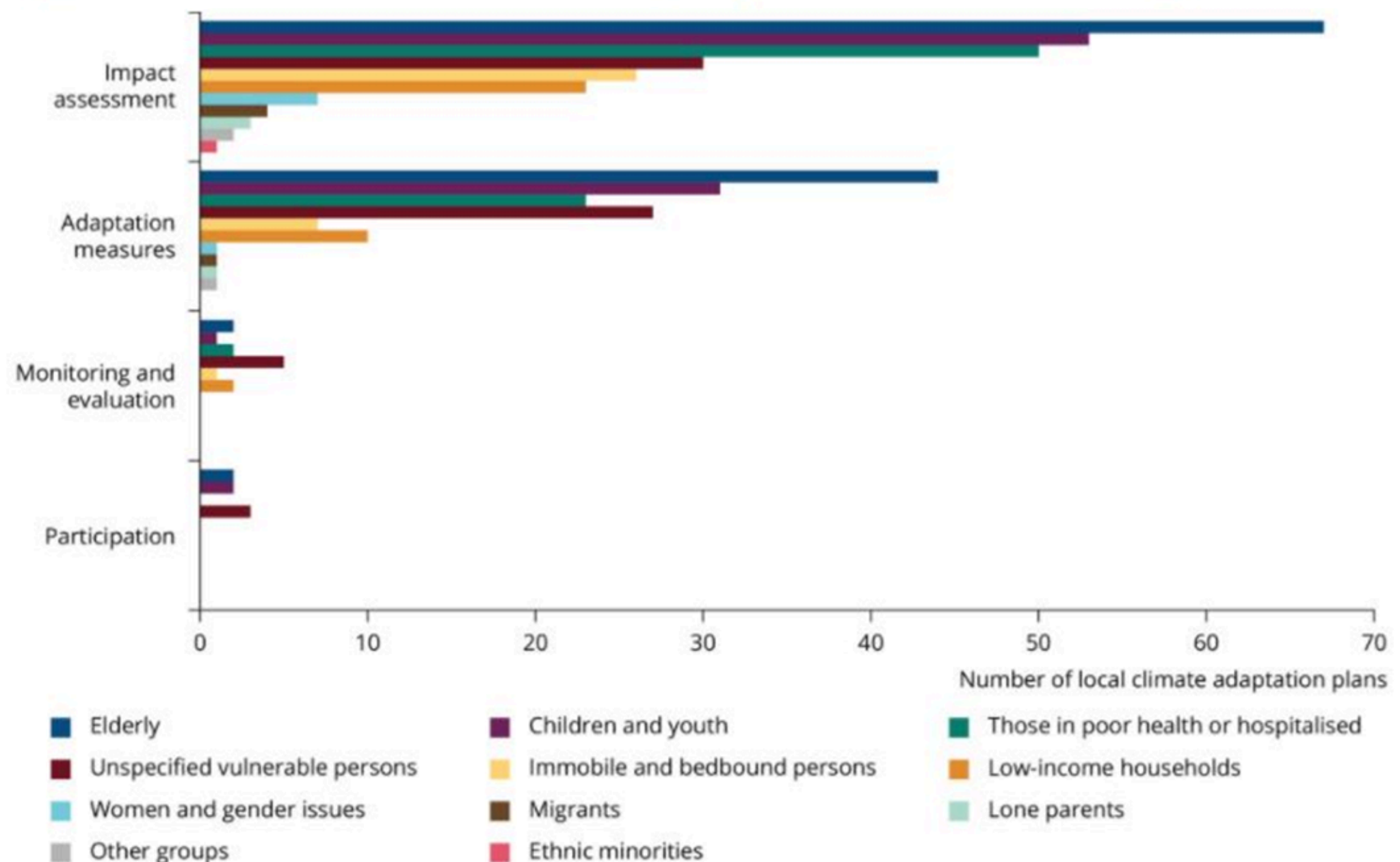
**rapidly rising temperatures in
Europe turn our cities into boiling,
unlivable spaces**



heat waves in Europe are intensified by climate change with disastrous impacts on vulnerable groups.



Figure 3. Consideration of vulnerable groups in local climate action plans



© 2022 AP Photo/Emilio Morenatti

Source: Reckien et al. (2022)

our vision

inclusive adaptation to
heat in cities

immediate and cost-
effective interventions on
urban spaces

involving vulnerable
groups in the process

integrating aesthetic
principles to improve the
liveability of the urban
environment



urban heat island



vulnerable groups



functions on public spaces



functions on public spaces



functions on public spaces





È meglio
così,
colorato,
giusto?

Ho votato
per il
lavanda!

bau bau

modular structure



how does it work in
practice?







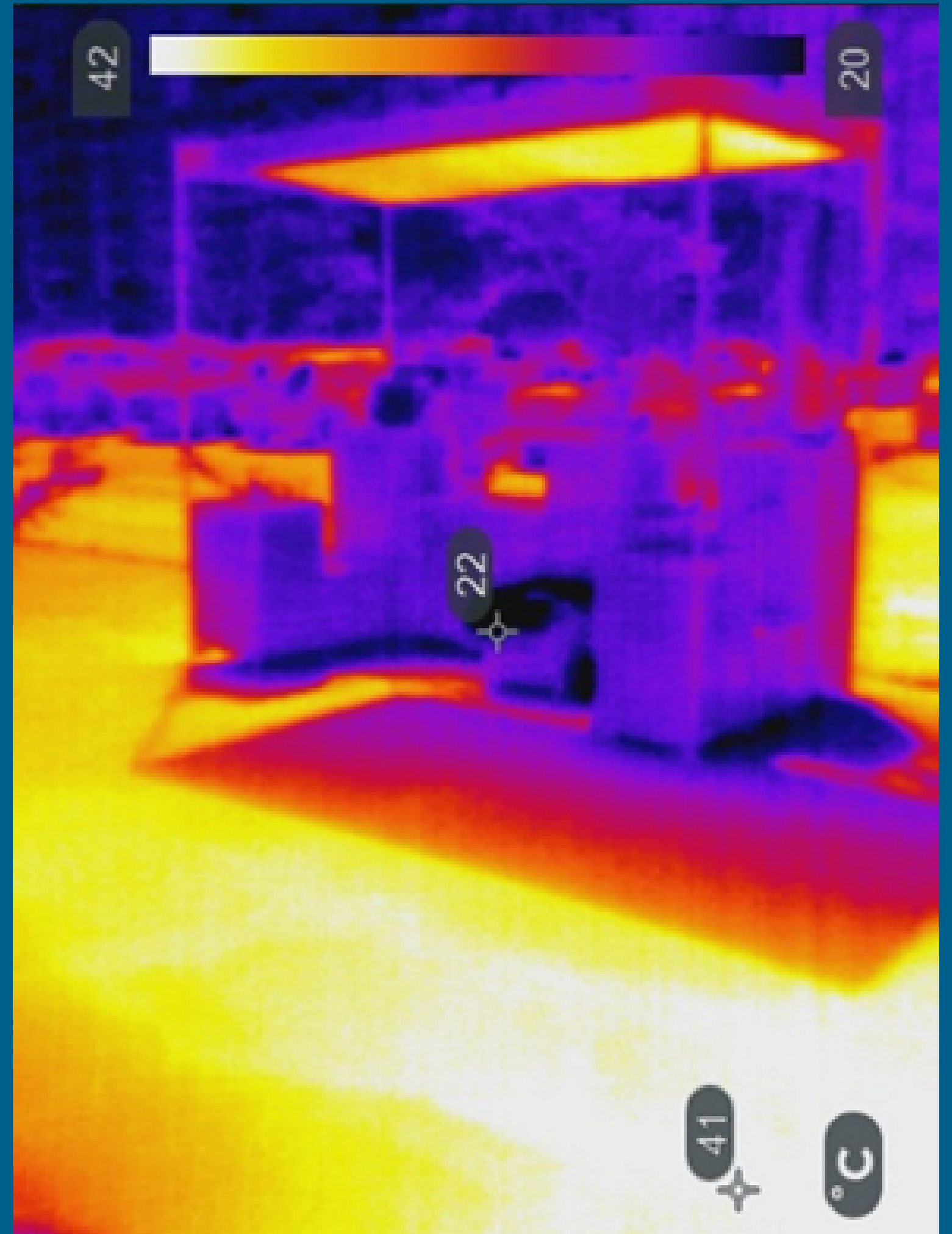
co-design IV.



impact

**reduced surface temperature
by 19 degrees Celsius**

**increased adaptability among
vulnerable populations**



**creation of a local
community**



replication



accessibility of public transport

semi-public places

**gardens of hospitals/health
facilities**

schools

PRIZES & CONTACTS

- **New European Bauhaus Prize** 2022 in the category Prioritising the places and people that need it the most
- IFKA **Social Innovation Award** in Hungary 2023



Funded by the
European Union



E-mail hello@coolcos.eu

Website www.coolcos.eu

Mobil +36308354735

